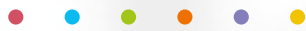


# The Architectural Series



Light is the principal beauty in building  
Capral Aluminium understands this

This document contains Capral's proprietary information and must not be copied or used without Capral's written permission. The information is intended as a guide only and you should consult a suitably qualified person for their application to the particular circumstances. Responsibility for code compliance remains with the user. Capral takes no responsibility for any loss or damage whatsoever arising from errors contained in this document.

Capral are proud to be experts in creating glazing solutions for the building industry. We don't merely design windows but strive to create products that integrate into the building design. We provide solutions to problems. Our products blend seamlessly into the aesthetic of any project and we focus not only on cost but the value that Capral and our products add to any project.

The Capral Architectural Series pulls together systems from the comprehensive Capral product range to provide inspiration and choice for the future of architectural design.

# CAPRAL ALUMINIUM

You will find our selection of door, window and framing systems offer a great range of functionality such as projection, sliding and folding options, and also meet the demands of different architectural styles – be they single or multi-story projects.

Each system in the collection has a dedicated page that discusses its features, benefits and specifications. From energy and structural performance through to acoustic and glazing capabilities, you will find all the crucial information to make an educated specification decision.

Every product in the Capral Architectural Series has a story behind it – read on to find out more.

# Who is Capral Aluminium and what do we offer?

Established in 1936, Capral Aluminium is Australia's largest manufacturer and distributor of aluminium products. We also design and extrude aluminium window and door systems with an enviable reputation for quality, style and performance.

Capral Aluminium is proud to offer an extensive range of systems made in Australia, designed and tested to fulfil every need of today's modern living requirements. Our window and door systems allow light, space and thermal comfort to be at the forefront of every building's design.

In addition to a standard range of aluminium window and doors traditionally available to the Australian market, Capral has developed a high performance range of architectural glazing systems to cater for contemporary trends whilst providing sustainable, energy efficient facade solutions.



## Capral Aluminium Heritage

Capral Aluminium has been investing in the Australian industry and Australian jobs since 1936.

We understand the Australian market and its environmental conditions and this has made us Australia's leading designer, extruder and distributor of window and door systems.

## R&D and Product Testing

Capral Aluminium maintains an in-house team of designers and engineers that represents one of the most experienced product development groups in the industry. This capability combined with our NATA accredited test facilities means Capral window and door systems are subjected to rigorous testing to ensure they meet and exceed structural, weather and operational performance requirements.

## Manufacturing Footprint

Capral Aluminium's manufacturing footprint includes the largest extrusion facility in the Southern Hemisphere at our Bundamba operation in Queensland. Extrusion manufacturing facilities are also located in Victoria, New South Wales, South Australia and Western Australia, supplying world class products at short lead times.

## Distribution Network

Our extensive metropolitan and regional distribution network services a wide range of industries including residential and commercial construction, transport, marine and general engineering. Regional distribution centres support a network of conveniently located trade centres.

## Australian Supply Chain

As a local manufacturer, we are required to meet Australian environmental regulations and standards in manufacturing and finishing operations. Understanding the full life cycle impact of products means Capral's manufacturing processes and materials can be traced back to their source.

## Fabrication Partners

Capral Aluminium supplies a network of independently owned fabricators with extensive experience in the fabrication and installation of Capral window and door systems. These fabricators operate in both metropolitan and regional locations throughout Australia.



Photo: Joel LaBitta, D-MAX Photography

## A sustainable solution for contemporary living

Capral is committed to developing products that deliver positive environmental outcomes. The many facets of our operations help us achieve this goal:

### Aluminium - The Super Metal

Aluminium boasts one of the highest recycling rates of any metal. At the end of their long life, Capral aluminium window and door extrusions can be readily recycled.

### Coatings and Finishes

Capral uses and recommends Interpon powder coatings containing no organic solvents or heavy metal pigments such as lead.

### Energy Efficient Window and Door Systems

During their 'use phase', high performance aluminium window and door systems can deliver significant reductions in energy required for heating and cooling. The energy saved by using high performance window and door systems can be many hundreds of times greater than that consumed to produce the original aluminium extrusions.

### Australian Supply Chain

As a local manufacturer, Capral is required to meet Australian environmental regulations and standards in its manufacturing and finishing operations. Understanding the full life cycle impact of products requires manufacturing processes and materials to be traced back to their source. When materials are sourced from overseas, it can be difficult to know whether they have been produced in an environmentally responsible way.

### National Manufacturing Footprint

Capral's national manufacturing footprint allows our extrusions to be produced close to where they are required. This helps avoid unnecessary sea and road freight, reducing carbon dioxide emissions.

## Capral windows and doors architectural series

### Architectural Doors

Page 8	AGS 900 Series Sliding and Cavity Door
Page 10	Urban 584 Series Sliding Door
Page 12	AGS 215 Series Door
Page 14	AGS 225 Series Door
Page 16	Artisan Folding Door
Page 18	Futureline Lift & Slide Door
Page 20	Futureline Hinged Door

### Architectural Windows

Page 24	AGS Euro Awning/Casement Window
Page 26	AGS 50 Series Awning/Casement Window
Page 28	Futureline Awning/Casement Window
Page 30	AGS 950 Series Sliding Window
Page 32	AGS 480 Series Sliding Window
Page 34	Futureline Sliding Window
Page 36	AGS 471 Double Hung Window
Page 38	AGS Euro Tilt and Turn Window
Page 40	Capral 125 Louvre Window
Page 42	Amplimesh Security Screens
Page 44	IntrudaGuard Security Screens

### Architectural Framing Systems

Page 48	AGS 400 & 425 Narrowline Framing Systems
Page 50	AGS 450 Narrowline Wide Double Glaze Framing System
Page 52	AGS 419 Flushline Framing System
Page 54	Futureline 440TB Framing System
Page 56	Futureline 419TB Framing System
Page 58	AGS CW175 Curtain Wall Framing System
Page 60	AGS CW150 Curtain Wall Framing System
Page 62	Schüco Windows, Doors & Facades



## Capral Architectural Doors

Doors in the Capral Architectural Series have been selected to epitomise some very specific key criteria – compatibility, value, strength and reliability.

**Compatibility** not only with the building interface but also with other Capral glazing systems. Glazed doors should be an integrated access solution, not just a door.

**Value** is represented by getting the maximum return on your investment – you will always be satisfied with Capral value.

**Strength** offers flexibility and opens up possibilities. We don't want to limit your imagination, so our doors can offer panel sizes and configurations to offer a high degree of design flexibility.

**Reliability** is not only designed into our products but ingrained in our design philosophy. Our reputation is built on our product quality and we test all our products for the harshest conditions with hardware we trust.

So whether you want a hinged or pivoting entry door, a sliding door to a patio or a folding door out to an entertainer's deck, you can be sure these Capral products offer the qualities that you are looking for.

# Architectural Doors

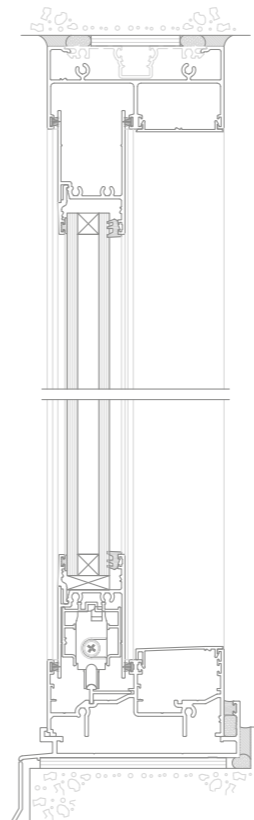
## AGS 900 Series Sliding and Cavity Door



The cutting edge AGS 900 Series Sliding and Cavity Door represents the latest generation of commercial door development.

Specifically designed to deliver unrivalled performance and design flexibility, the AGS 900 Series Sliding and Cavity Door is capable of panel sizes up to 3000mm in height and 2500mm in width, with multi-stack configurations available. This product has been fully tested to meet cyclonic requirements. Incorporating high quality hardware including heavy duty double wheel rollers and various locking options, the AGS 900 Series Sliding and Cavity Door is proving extremely popular on many landmark commercial projects including Waterfront at Newstead Brisbane, Fairlanes Apartments Perth and Edens Apartments Melbourne.

For enhanced thermal comfort and performance, double glazing is possible incorporating insulated glass units up to 26mm in thickness.



### FEATURES AND BENEFITS:

- Ultra high performance design
- Suited to almost any commercial or architectural application
- Extended product limitations for large configurations
- Tested to cyclonic requirements
- High performance roller hardware
- Standard and multi-stack configurations of up to 6 panels
- May be internally or externally screened

### PERFORMANCE

Serviceability	Ultimate Pressure	Water Penetration
up to 6000Pa	up to 10500Pa	up to 700Pa

### FRAME SIZE

Depth	Height
100mm	44mm, 50mm, 80mm
150mm	44mm, 50mm, 80mm

### MAX. RECOMM. PANEL SIZE

Height	Width	Weight
up to 3000mm	Std Rail up to 1750mm HD Rail up to 2500mm	up to 160kg or 250kg

### ACOUSTICS

RW	39
C,CTR	(-1;-3)

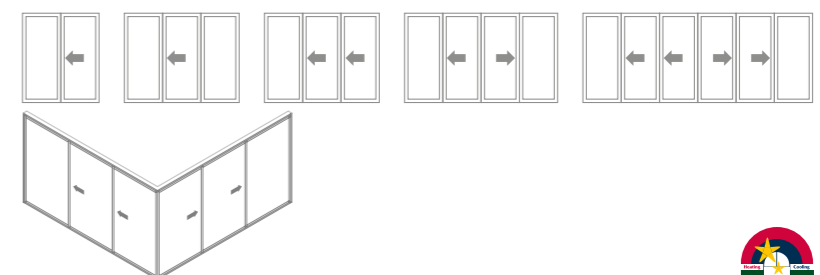
### GLAZING CAPACITY

Single Glaze	4mm - 15mm
Double Glaze	19mm - 26mm

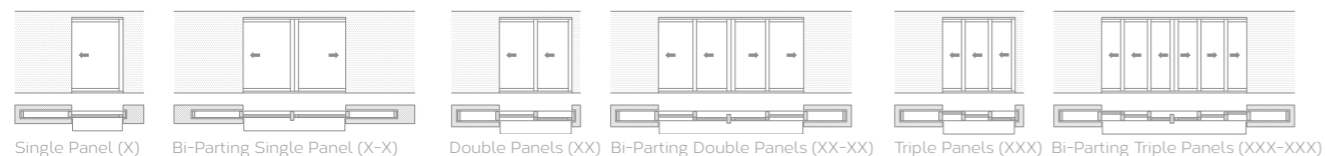
### WINDOW ENERGY RATINGS\*

Single Glazed		Total Window - AFRC			
Window ID	Glazing	Uw	SHGC	Tvw	Air Inf.
CAP-056-01	6mm Clear	6.0	0.64	0.66	0.37
CAP-056-05	6mm Energy Advantage	4.4	0.54	0.61	0.37
CAP-056-12	6.38mm Comfort Plus Clear	4.4	0.53	0.62	0.37
Double Glazed		Total Window - AFRC			
CAP-057-01	6mm Clear 12mm Air Gap 6mm Clear	3.9	0.55	0.59	0.37
CAP-057-07	6.38mm Comfort Plus Clear 12mm Air Gap 6mm Clear	3.3	0.47	0.55	0.37
CAP-057-13	6mm Energy Advantage 12mm Argon Gap 6mm Clear	3.1	0.48	0.55	0.37

### CONFIGURATIONS



### CAVITY OPTIONS

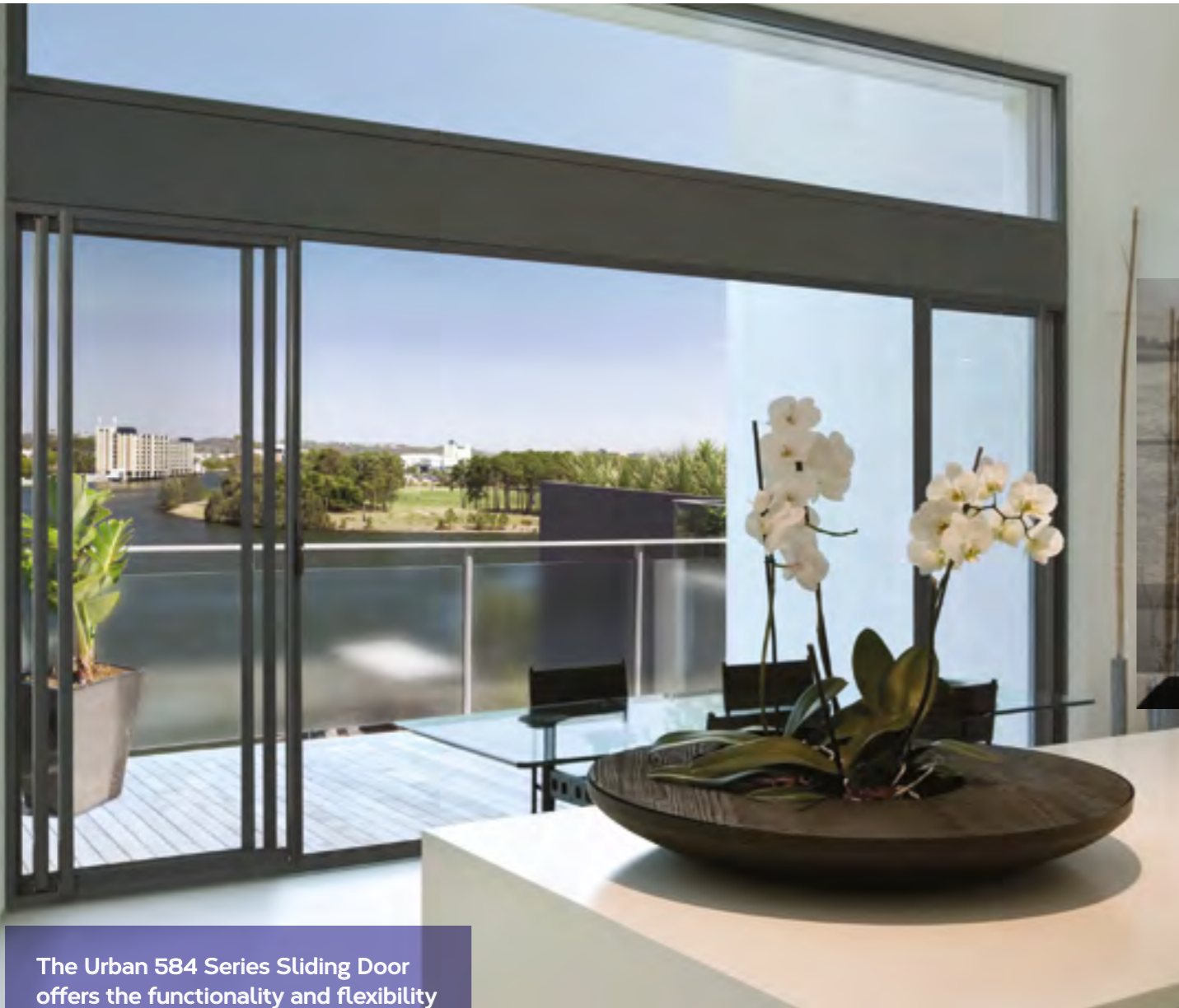


\*Log on to [www.wers.net](http://www.wers.net) to view the full Capral AFRC product directory



# Architectural Doors

## Urban 584 Series Sliding Door



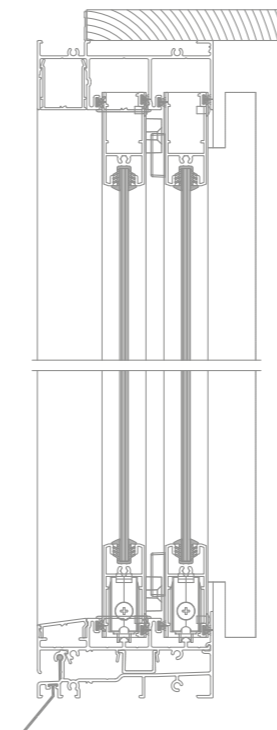
The Urban 584 Series Sliding Door offers the functionality and flexibility of a residential sliding door with the performance and appearance of commercial grade product.

Featuring attractive tubular structural interlocks and offering optional multi-stack configurations, the Urban 584 Series Sliding Door can also accommodate a wide range of standard lock hardware.

For improved thermal comfort and performance, double glazing of up to 18mm is also available.



### CAVITY OPTIONS



### FEATURES AND BENEFITS:

- Single and double glazing options.
- Adjustable, non-corrosive roller hardware.
- Fully integrated insect and security screening options.
- Compatible with a wide range of AGS suites

### PERFORMANCE

Serviceability	Ultimate Pressure	Water Penetration
up to 3000Pa	up to 6000Pa <sup>†</sup>	up to 450Pa

<sup>†</sup>Achievable using panel retaining block system

### FRAME SIZE

Depth	Height
101.6mm	50mm Std Sill
101.6mm	19mm Low Sill

### MAX. RECOMM. PANEL SIZE

Height	up to 2700mm
Width	Std Rail up to 1200mm
	HD Rail up to 1500mm
Weight	up to 50kg or 160kg

### ACOUSTICS

RW	35	53
C,CTR	(-1;-4)	(-2;-7) <sup>#</sup>

<sup>#</sup>Using secondary glazed configurations.

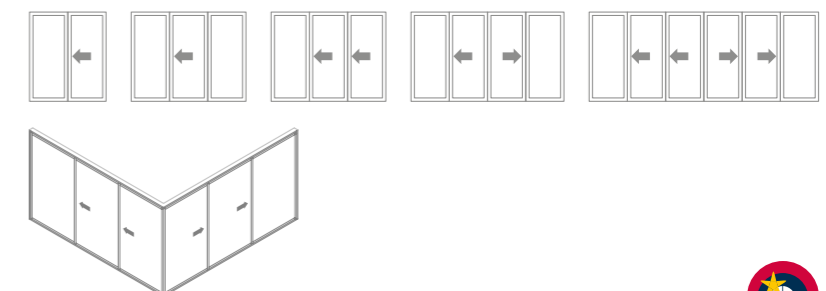
### GLAZING CAPACITY

Single Glaze	4mm - 10mm
Double Glaze	16mm & 18mm

### WINDOW ENERGY RATINGS\*

Window ID	Glazing	Total Window - AFRC			
		Uw	SHGC	Tvw	Air Inf.
<b>Single Glazed</b>					
CAP-126-02	6mm Clear	6.0	0.69	0.73	0.23
CAP-126-05	6.38mm Clear Laminate	6.0	0.67	0.73	0.23
CAP-126-07	6mm Comfort Plus Clear	4.2	0.58	0.68	0.23
<b>Double Glazed</b>					
		Total Window - AFRC			
CAP-127-01	4mm Clear 10mm Air Gap 4mm Clear	3.7	0.63	0.66	0.23
CAP-127-06	4mm Energy Tech 10mm Argon Gap 4mm Clear	2.9	0.54	0.62	0.23
CAP-127-10	Lightbridge Grey SO 5/8/5	2.8	0.32	0.35	0.23

### CONFIGURATIONS



\*Log on to [www.wers.net](http://www.wers.net) to view the full Capral AFRC product directory



# Architectural Doors

## AGS 215 Series Door



The AGS 215 Door is a 36mm pocket glazed hinged door panel designed to meet the market demand for a cost effective hinge door while still having the key attributes of a commercial hinged door. This makes it ideal for semi-architectural and light commercial projects such as domestic entry doors, internal applications or lower traffic use where the installation of a full commercial door would be excessive.

The AGS 215 Door is also compatible with a vast range of commercial and architectural locks and furniture as well as the full range of Capral framing systems.



### FEATURES AND BENEFITS:

- 36mm door panel
- Suits both single and double glazing
- Hinged, french and entry door configurations
- Suits light-commercial and semi-architectural applications
- Compatible with a wide range of framing suites
- Open in and open out configurations

### PERFORMANCE

Serviceability	Ultimate Pressure	Water Penetration
up to 4500Pa	up to 7500Pa	Open Out: up to 300Pa Open In: up to 150Pa

### DOOR PANEL SIZE

Depth	36mm
-------	------

### MAX. RECOMM. PANEL SIZE

Height	up to 2700mm
Width	up to 900mm

### ACOUSTICS

RW	31
C,CTR	(0;-1)

### GLAZING CAPACITY

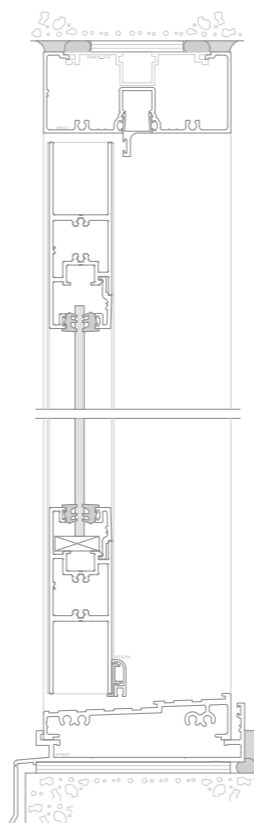
Single Glaze	4mm - 10mm
Double Glaze	16mm - 18mm

### WINDOW ENERGY RATINGS\*

Single Glazed		Total Window - AFRC			
Window ID	Glazing	Uw	SHGC	Tvw	Air Inf.
CAP-514-01	6.38mm Clear Laminated	5.8	0.51	0.54	1.24
CAP-514-03	6.38mm ComfortPlus Clear	4.5	0.44	0.50	1.24
CAP-514-06	6mm Grey Glass	5.9	0.38	0.26	1.24
Double Glazed		Total Window - AFRC			
CAP-515-01	4mm Clear 10mm Air Gap 4mm Clear	4.2	0.48	0.49	1.24
CAP-515-05	4mm Energy Tech 10mm Air Gap 4mm Clear	3.7	0.42	0.46	1.24
CAP-515-08	Lightbridge Grey SO 4/10/4	3.4	0.27	0.30	1.24

Note: Ratings above are for AGS 215 Open In Hinged Door into 400 Narrowline Frame. Other configurations also available.

### CONFIGURATIONS



\*Log on to [www.wers.net](http://www.wers.net) to view the full Capral AFRC product directory





# Architectural Doors

## AGS 225 Series Door



The AGS 225 Door is a 46mm pocket glazed commercial door panel capable of hinge, pivot and sliding door configurations and has been designed with flexibility, performance and ease of assembly in mind. The AGS 225 Door builds on the trusted and reliable 200 and 275 Series Doors, suiting a wide range of applications from architectural entry doors through to commercial shopfronts.

The AGS 225 Door can be fitted with either single or double glazed units and has the option of standard and wide stiles. It is also compatible with a vast range of commercial and architectural locks and furniture as well as the full range of Capral framing systems.



### FEATURES AND BENEFITS:

- 46mm Door Panel
- Narrow and wide stile options accommodate a wide range of hardware
- Shallow rail option
- Suits both single and double glazing
- Hinged, french, pivot and sliding door panel configurations
- Suits commercial or architectural applications
- Compatible with a wide range of framing suites
- Open in and open out configurations

### PERFORMANCE

Serviceability	Ultimate Pressure	Water Penetration
up to 4500Pa	up to 10,000Pa	Open Out: up to 900Pa Open In: up to 300Pa

### DOOR PANEL SIZE

Depth	46mm
-------	------

### GLAZING CAPACITY

Single Glaze	4mm - 12mm
Thick Glaze	14mm - 18mm
Double Glaze	19mm - 31mm

### MAX. RECOMM. PANEL SIZE

Door	Height	Width
Hinged	3000mm	1200mm
Pivot	3000mm	1200mm
Sliding	2700mm	1800mm

### ACOUSTICS

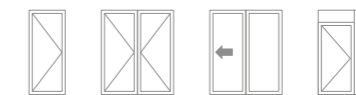
RW	36
C,CTR	-1,-2

### WINDOW ENERGY RATINGS\*

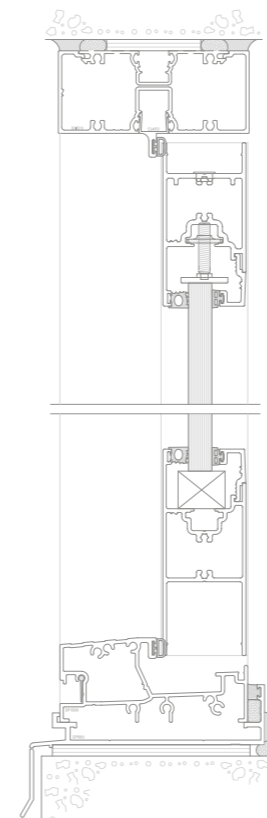
Single Glazed		Total Window - AFRC			
Window ID	Glazing	Uw	SHGC	Tvw	Air Inf.
CAP-518-01	638mm Clear Laminare	5.9	0.53	0.56	0.53
CAP-518-03	638mm ComfortPlus Clear	4.6	0.45	0.52	0.53
CAP-518-06	6mm Grey	5.9	0.39	0.26	0.53
Double Glazed		Total Window - AFRC			
CAP-519-01	638mm Clear Laminare 12mm Air Gap 6mm Clear	4.0	0.45	0.50	0.53
CAP-519-06	24mm Insulglass Max 564 Ar	3.3	0.19	0.40	0.53
CAP-519-08	Lightbridge Grey SO 5/14/5	3.3	0.25	0.27	0.53

Note: Ratings above are for AGS 225 Open In Hinged Door into 400 Narrowline Frame. Other configurations also available.

### CONFIGURATIONS



\*Log on to [www.wers.net](http://www.wers.net) to view the full Capral AFRC product directory



# Architectural Doors

## Artisan Folding Door



The Artisan Folding Door incorporates a technologically advanced folding door system that surpasses that of ordinary folding doors on the market. It moves and feels like no other, because it's made like no other. At the heart of it all – Effortless Motion Technology (emt), Capral's AGS 'Smart Hinge' and 'Easy Gliding' Channel.

This product combines aluminium with high quality 316 marine grade stainless steel components. The integrated folding door system has excellent weather tightness, security, environmental and structural performance. Additional functionality is also incorporated includes internal and external 90° corners.



### FEATURES AND BENEFITS:

- Heavy duty roller, capable of taking 100kg load per panel
- AGS 'Smart Hinge' using 316 marine grade stainless steel
- AGS 'Smart Groove' technology for superior fabrication
- AGS multi-point locking system
- Sill options including channel, flat and high performance
- AGS 'Easy Gliding' Channel
- Slim operating handle with adjustable positioning height
- Single and double glazing options available

### PERFORMANCE

Wind Pressure	Ultimate Pressure	Water Penetration
up to 3000Pa	up to 3500Pa	up to 450Pa

### FRAME SIZE

Depth	Height
101.6mm	2mm Channel Sill
101.6mm	29mm Flat Sill
101.6mm	45mm Std Sill
101.6mm	57mm HP Sill

### MAX. RECOMM. PANEL SIZE

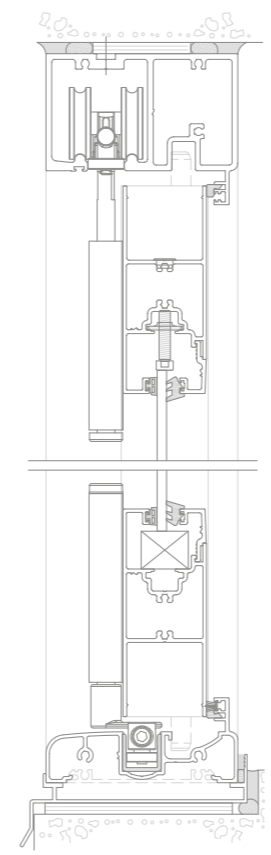
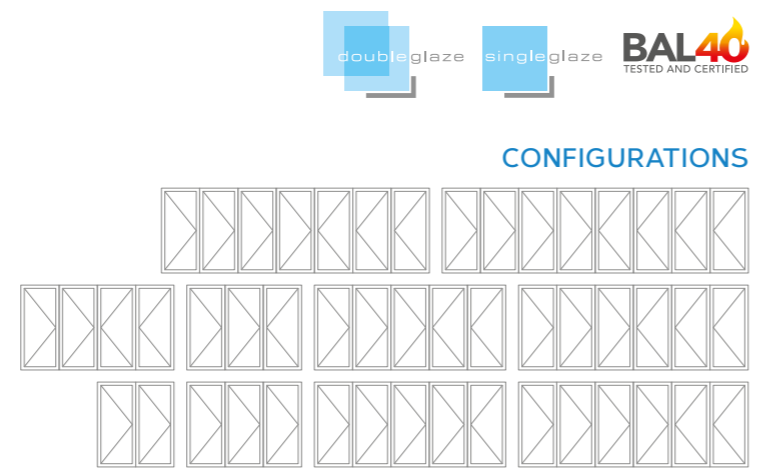
Height	Width	Weight
up to 3000mm	up to 1000mm	up to 100kg

### GLAZING CAPACITY

Single Glaze	4mm - 12mm
Thick Glaze	14mm - 18mm
Double Glaze	19mm - 31mm

### WINDOW ENERGY RATINGS\*

Single Glazed		Total Window - AFRC			
Window ID	Glazing	Uw	SHGC	Tvw	Air Inf.
CAP-042-01	6mm Clear	6.0	0.55	0.57	0.33
CAP-042-04	6mm Energy Advantage	4.6	0.48	0.53	0.33
CAP-042-06	6.38mm Comfort Plus Neutral	4.6	0.35	0.38	0.33
Double Glazed		Total Window - AFRC			
CAP-043-01	6mm Clear 12mm Air Gap 6mm Clear	4.2	0.47	0.49	0.33
CAP-043-03	6mm Energy Advantage 12mm Air Gap 6mm Clear	3.7	0.41	0.46	0.33
CAP-043-05	6mm Grey 12mm Argon Gap 6mm Clear	4.1	0.30	0.24	0.33

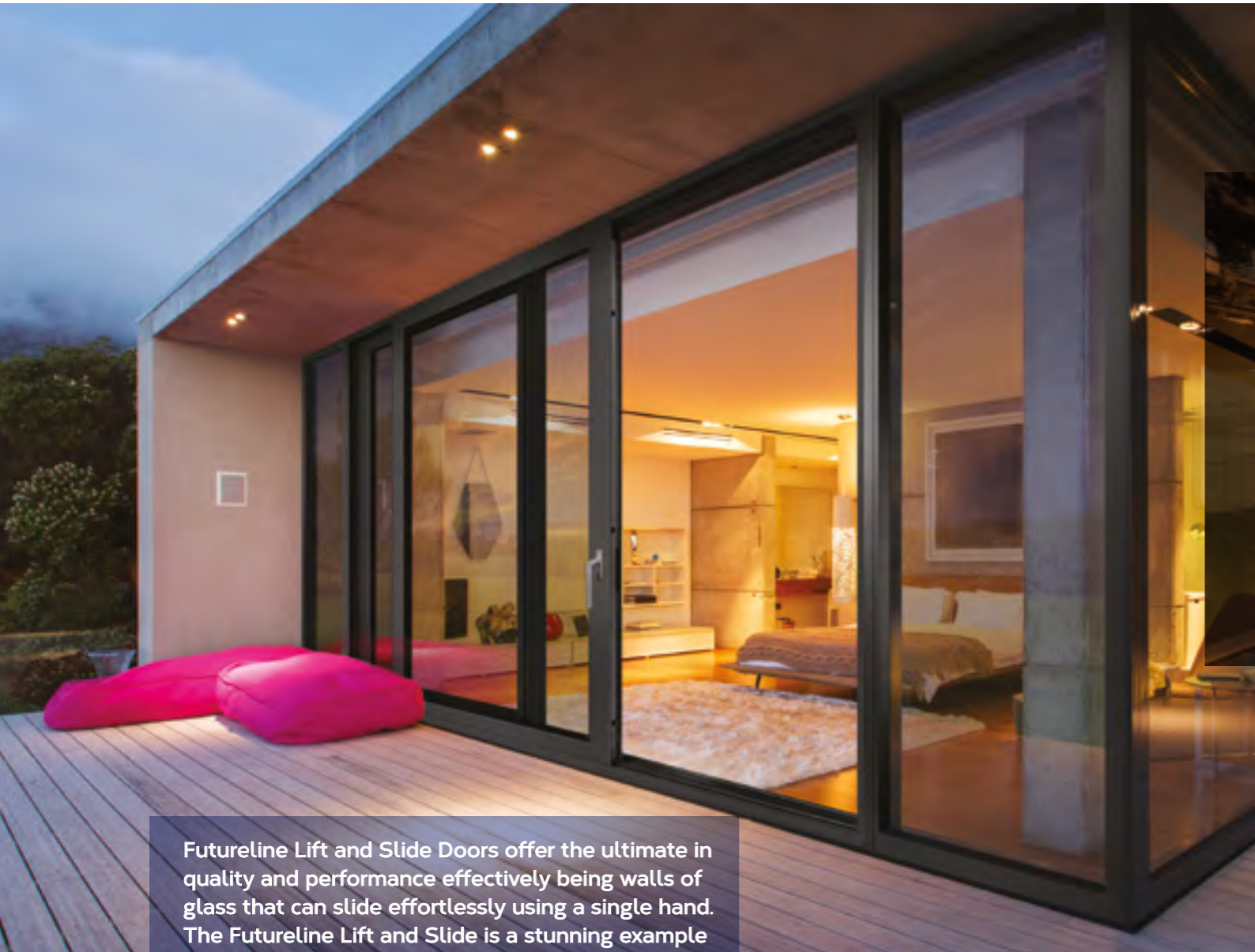


\*Log on to [www.wers.net](http://www.wers.net) to view the full Capral AFRC product directory



# Architectural Doors

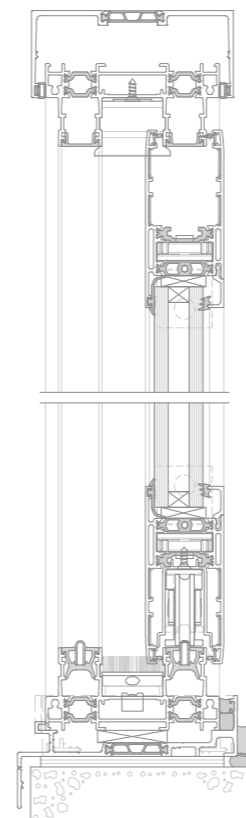
## Futureline Lift & Slide Door



Futureline Lift and Slide Doors offer the ultimate in quality and performance effectively being walls of glass that can slide effortlessly using a single hand. The Futureline Lift and Slide is a stunning example of its kind, utilising the same outstanding thermal break technology and crisp and clean lines as the Futureline Sliding Door and Window.

By having the same frame and sash as the Futureline Sliding Door and Window, the Lift and Slide blends seamlessly with the rest of the Futureline range. Its special hardware, that enables the lift and slide functionality, is a high end European system meaning that the quality and durability of the product is difficult to match.

The Lift and Slide has a 45mm deep sash, midrail option and supports multiple configurations. The handle design completes the door by providing an architectural finish.



### FEATURES AND BENEFITS:

- Outstanding 'Uw' values down to 2.2
- Industry standard 100mm frame with strong 45mm deep panels
- 102mm sash 'face' gives a strong architectural aesthetic with an 84mm midrail available as an option
- Mitred frame and sash corner construction with high quality hardware
- Fixed-Slide (OX) and Slide-Slide (XX) configurations
- Compatible with the Futureline 440TB Framing System

### PERFORMANCE

Serviceability	Ultimate Pressure	Water Penetration
up to 1200Pa	up to 2,300Pa	up to 450Pa

### FRAME SIZE

Depth	100mm
Height	47.5mm

### MAX. RECOMM. PANEL SIZE

Height	3000mm
Width	2400mm
Weight	300kg

### ACOUSTICS

RW	33 <sup>†</sup>
C,CTR	(0;-2) <sup>†</sup>

### GLAZING CAPACITY

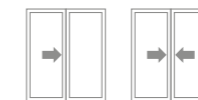
Double Glaze	24mm - 34mm
--------------	-------------

<sup>†</sup>Tested as a sliding configuration

### WINDOW ENERGY RATINGS\*

Window ID	Glazing	Total Window - AFRC			
		Uw	SHGC	Tvw	Air Inf.
CAP-133-01	6mm Clear 12mm Air Gap 6mm Clear	3.1	0.47	0.50	0.67
CAP-133-02	6mm Energy Tech 12mm Air Gap 6mm Clear	2.6	0.41	0.46	0.67
CAP-133-03	24mm Insulglass Max 564 Air	2.4	0.19	0.40	0.67
CAP-133-10	6.38mm Comfort Plus Clear 12mm Argon Gap 6mm Clear	2.4	0.40	0.46	0.67
CAP-133-11	6mm Grey 12mm Air Gap 6mm Clear	3.1	0.30	0.23	0.67
CAP-133-19	Lightbridge Grey SO 5/12/5	2.3	0.26	0.28	0.67

### CONFIGURATIONS

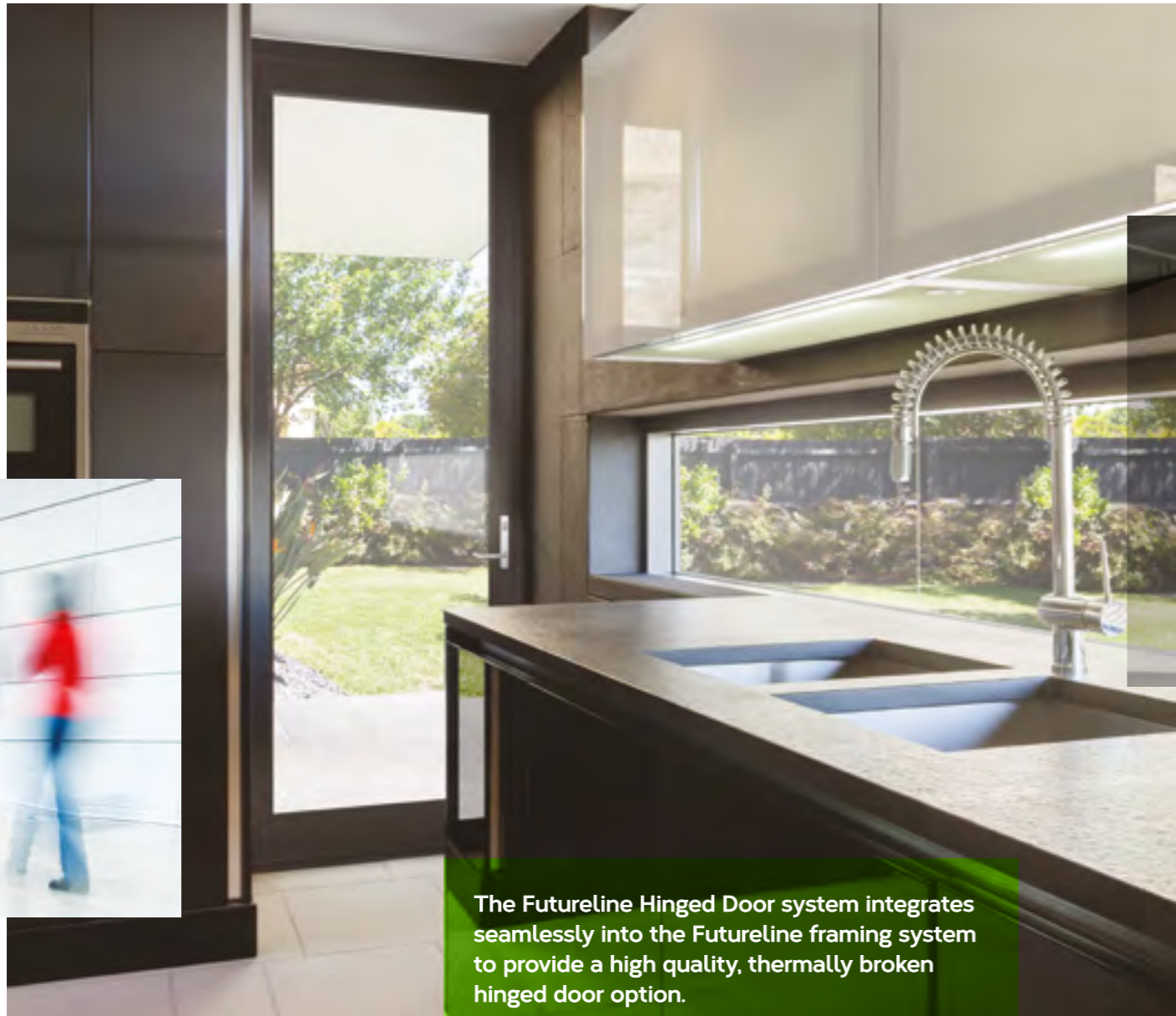


\*Log on to [www.wers.net](http://www.wers.net) to view the full Capral AFRC product directory



# Architectural Doors

## Futureline Hinged Door



The Futureline Hinged Door system integrates seamlessly into the Futureline framing system to provide a high quality, thermally broken hinged door option.

The 46mm door panel has been designed with clean, flat faces and a choice of standard or tall door rail options for added design flexibility. Midrails are also available to create a segmented look or to align with adjacent transoms.

High quality hardware is featured throughout including heavy duty corner spigots, hinges and optional multi-point locks.

The door panel profiles incorporate a pair of wide thermal spacers to minimise heat transfer while a selection of glazing bead options accommodate double glazing up to a width of 32mm.



### FEATURES AND BENEFITS:

- Outstanding 'Uw' values down to 2.5
- Industry standard 46mm door panel profile
- Two rail and midrail (standard and tall) options
- Spigot corner joints
- Crisp, clean square profiles
- Capable of accommodating IGU's up to 32mm
- High quality hardware
- Compatible with Futureline 440TB & 419TB Framing Systems

### PERFORMANCE

Serviceability	Ultimate Pressure	Water Penetration
up to 1500Pa	up to 2,500Pa	up to 600Pa

### PANEL SIZE

Rail Depth	46mm
Rail Height	89mm or 120mm

### MAX. RECOMM. PANEL SIZE

Height	2700mm
Width	1000mm
Weight	115kg

### ACOUSTICS

RW	36
C,CTR	(-2;-2)

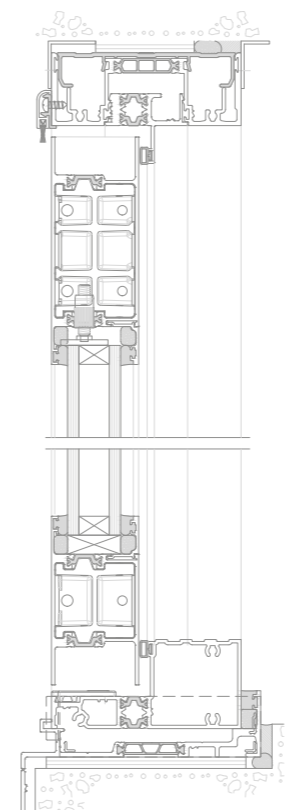
### GLAZING CAPACITY

Single Glaze	6mm - 10mm
Thick Glaze	11mm - 18mm
Double Glaze	19mm - 32mm

### WINDOW ENERGY RATINGS\*

Window ID	Glazing	Total Window - AFRC			
		Uw	SHGC	Tvw	Air Inf.
CAP-115-01	6mm Clear 12mm Air Gap 6mm Clear	3.3	0.48	0.51	0.27
CAP-115-04	6mm Energy Tech 12mm Argon Gap 6mm Clear	2.7	0.42	0.47	0.27
CAP-115-05	24mm Insulglass Max 564 Ar	2.5	0.20	0.41	0.27
CAP-115-09	6.38mm Comfort Plus Clear 12mm Argon Gap 6mm Clear	2.7	0.41	0.47	0.27
CAP-115-19	6mm Grey 12mm Air Gap 6mm Clear	3.3	0.32	0.24	0.27
CAP-115-22	Lightbridge Grey SO 5/12/5	3.2	0.28	0.29	0.27

### CONFIGURATIONS



\*Log on to [www.wers.net](http://www.wers.net) to view the full Capral AFRC product directory





Windows have traditionally been a simple method of introducing natural ventilation and light into a room. You will find there is something a bit more special about the window systems in the Capral Architectural Series.

Awning and casement windows are chosen for the volume of airflow that can pass through them as the entire window opens. Capral awning and casement windows take this a step further because of their ability to have extra large openings and are compatible across all Capral frame types.

Capral sliding windows are built “pretty tough”. They’re not only pleasing on the eye but rugged enough to withstand the rigours of daily use and the environment your project.

The Euro Tilt & Turn introduces technology to Australia that has long been common in Europe. As the name suggests, the Euro provides two functions – ventilation (tilt) and cleaning access (turn).

And every window system in the Architectural Series can be extremely safe with Capral’s very own SupaScreen or SupaSafe stainless steel window screens.

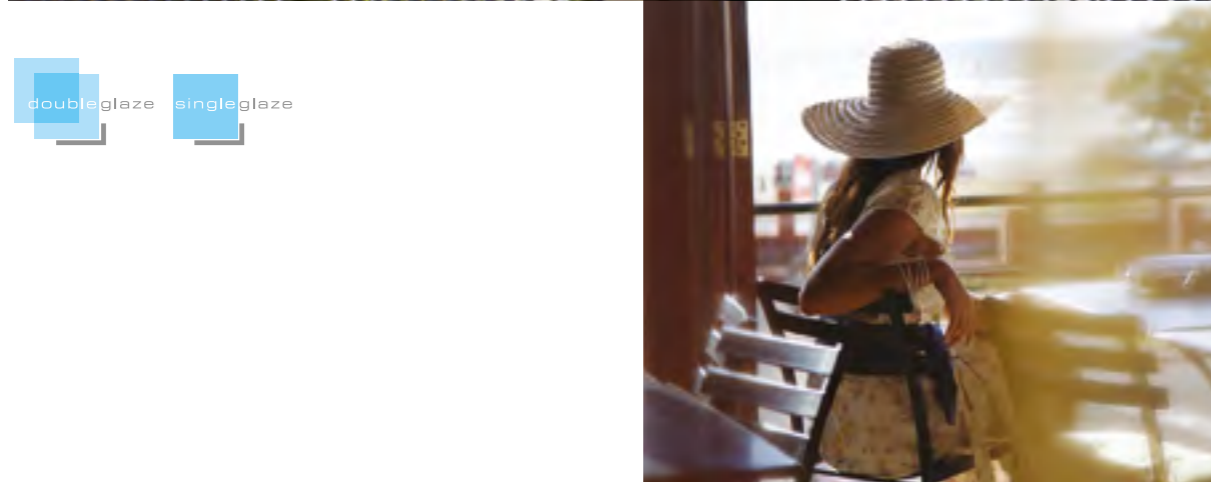
## Capral Architectural Windows

# Architectural Windows

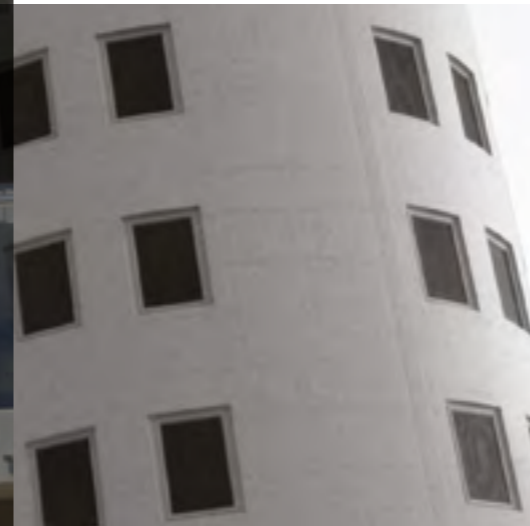
## AGS Euro Awning/Casement Window



The luxury is obvious in the AGS Euro Awning/Casement window. With the option of a casement window to allow for maximum exposure from the outside, or a top hung awning window, the AGS Euro Awning/Casement is perfect for almost any application.



doubleglaze singleglaze



### FEATURES AND BENEFITS:

- Single and Double Glazed options (up to 27mm)
- European designed components and hardware to improve functionality and adjustability
- Multiple and adjustable locking points allow large sizes and high wind pressures
- Option for screening system integrated into frame

### PERFORMANCE

Serviceability	Ultimate Pressure	Water Penetration
up to 4500Pa	up to 10,600Pa	up to 1200Pa

### FRAME SIZE

Depth	Height
†Adapts to Commercial Framing	

### MAX. RECOMMENDED SIZE

Height	Width	Weight
up to 2100mm	up to 1800mm	up to 60kg

### ACOUSTICS

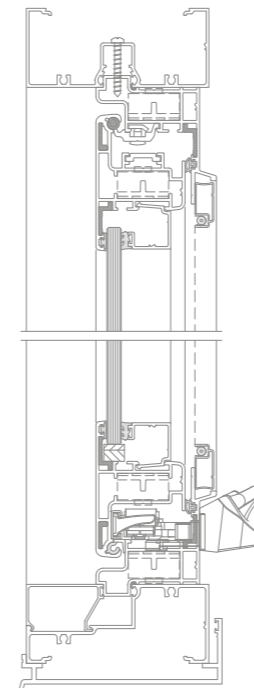
RW	39
C,CTR	(-2;-5)

### GLAZING CAPACITY

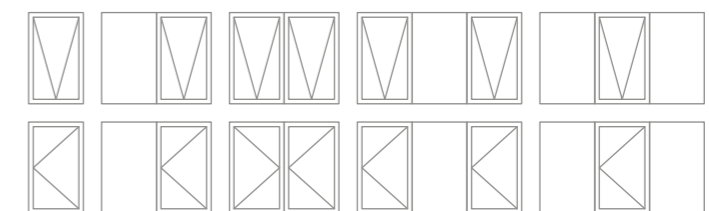
Single Glaze	4mm - 10mm
Thick Glaze	11mm - 18mm
Double Glaze	19mm - 27mm

### WINDOW ENERGY RATINGS\*

Single Glazed		Total Window - AFRC			
Window ID	Glazing	Uw	SHGC	Tvw	Air Inf.
CAP-135-01	4mm Clear	6.8	0.43	0.38	0.01
CAP-135-04	6.38mm Clear Laminate	6.7	0.41	0.38	0.01
CAP-135-05	6.38mm Comfort Plus Neutral	5.9	0.28	0.25	0.01
Double Glazed		Total Window - AFRC			
CAP-136-01	6mm Clear 12mm Air Gap 6mm Clear	5.2	0.36	0.34	0.01
CAP-136-04	6mm Energy Tech 12mm Argon Gap 6mm Clear	4.8	0.32	0.31	0.01
CAP-136-07	6.38mm Comfort Plus Clear 12mm Air Gap 6mm Clear	4.9	0.31	0.31	0.01



### CONFIGURATIONS



\*Log on to [www.wers.net](http://www.wers.net) to view the full Capral AFRC product directory



# Architectural Windows

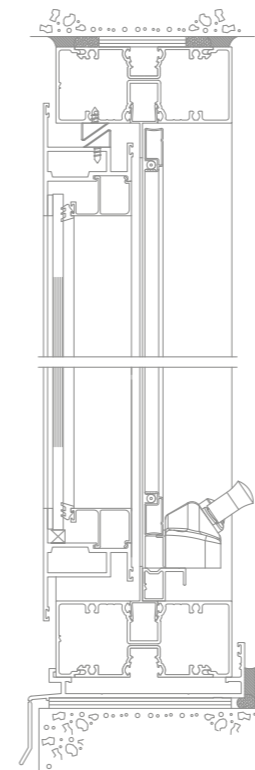
## AGS 50 Series Awning/Casement Window



The AGS 50 Series Awning/Casement Window is a high performance commercial operable window system capable of incorporating fixed lights and operable awning, casement or pivot sashes.

This product may be fabricated in a number of configurations allowing for a wide variety of applications.

For enhanced thermal comfort and performance, double glazing is available supporting insulated glass units up to 25mm thick.



### FEATURES AND BENEFITS:

- Range of framing options
- Single and double glazing options
- Incorporates rain-screen design principles for improved performance
- High degree of design flexibility
- Compatible with a range of Capral suites

### PERFORMANCE

Serviceability	Ultimate Pressure	Water Penetration
up to 1750Pa	up to 3750Pa	up to 1000Pa

### FRAME SIZE

Depth	Height
51mm	65mm Sash

### MAX. RECOMMENDED SIZE

	Awning	Casement
Height	up to 1800mm	1500mm
Width	up to 1500mm	900mm
Weight	up to 43kg	40kg

### ACOUSTICS

RW	40
C,CTR	(-1;-4)

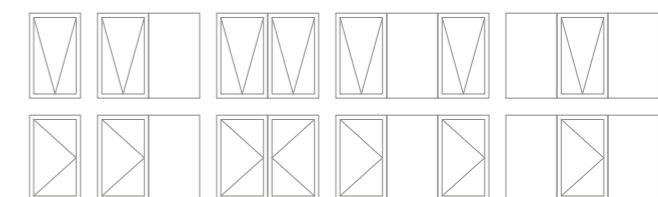
### GLAZING CAPACITY

Single Glaze	4mm-12mm
Double Glaze	22mm-38mm

### WINDOW ENERGY RATINGS\*

Single Glazed		Total Window - AFRC			
Window ID	Glazing	Uw	SHGC	Tvw	Air Inf.
CAP-060-01	6mm Clear	7.1	0.51	0.50	0.56
CAP-060-05	6mm Energy Advantage	6.0	0.45	0.46	0.56
CAP-060-07	6.38mm ComfortPlus Neutral	6.0	0.34	0.33	0.56
Double Glazed		Total Window - AFRC			
CAP-061-01	6mm Clear 12mm Air Gap 6mm Clear	5.0	0.44	0.44	0.56
CAP-061-03	6mm Energy Advantage 12mm Air Gap 6mm Clear	4.5	0.40	0.41	0.56
CAP-061-08	6.38mm Comfort Plus Grey 12mm Air Gap 6.38mm Clear Laminare	4.5	0.31	0.20	0.56

### CONFIGURATIONS



\*Log on to [www.wers.net](http://www.wers.net) to view the full Capral AFRC product directory



# Architectural Windows

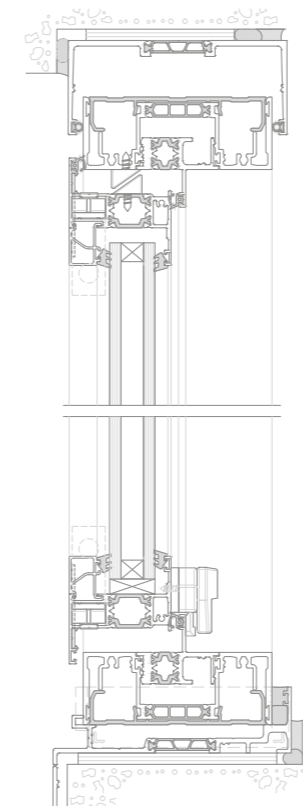
## Futureline Awning/Casement Window



Designed to complement the excellent thermal performance of the Futureline thermal break framing system, the Futureline Awning and Casement window system offers a stylish and functional operable window option.

The 54mm sash profile incorporates a pair of high performance polyamide strips to efficiently minimise heat transfer, while internal and external weather seals combined with an overlapping frame design offer a high level of weather-tightness.

The Futureline Awning and Casement window features the option of fully integrated screening and the flexibility of either sash handles or sash operator options. Robust sash construction and corner strength is assured with the use of high quality European corner clamping components.



### FEATURES AND BENEFITS:

- Outstanding 'Uw' values down to 2.7
- 54mm heavy duty sash profile
- Double weather seals
- Capable of accommodating IGU's up to 40mm
- Mitred corner construction with high quality hardware
- Compatible with Futureline 440TB & 419TB Framing Systems.

### PERFORMANCE

Serviceability	Ultimate Pressure	Water Penetration
up to 2200Pa	up to 4500Pa	up to 1000Pa

### MAX. RECOMMENDED SIZE

Awning		Casement	
Height	Up to 1800mm	Height	Up to 1800mm
Width	Up to 1500mm	Width	Up to 900mm
Total Area	Up to 1.8m <sup>2</sup> (Alu) Up to 2.3m <sup>2</sup> (SS)	Total Area	Up to 1.8m <sup>2</sup>
Weight	43kg	Weight	40kg

### FRAME SIZE

Sash Depth	54mm
------------	------

### GLAZING CAPACITY

Double Glaze	15mm - 40mm
--------------	-------------

### ACOUSTICS

RW	38
C,CTR	(-1;-3)

### WINDOW ENERGY RATINGS\*

Window ID	Glazing	Total Window - AFRC			
		Uw	SHGC	Tvw	Air Inf.
CAP-116-01	6mm Clear 12mm Air Gap 6mm Clear	3.5	0.45	0.48	0.24
CAP-116-04	6mm Energy Tech 12mm Argon Gap 6mm Clear	2.9	0.39	0.44	0.24
CAP-116-05	24mm Insulglass Max 564 Ar	2.7	0.18	0.39	0.24
CAP-116-09	6.38mm Comfort Plus Clear 12mm Argon Gap 6mm Clear	2.9	0.38	0.44	0.24
CAP-116-22	Lightbridge Grey SO 5/12/5	2.7	0.24	0.25	0.24

### CONFIGURATIONS



\*Log on to [www.wers.net](http://www.wers.net) to view the full Capral AFRC product directory





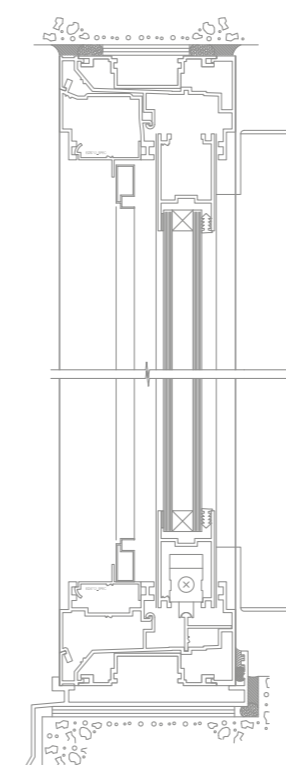
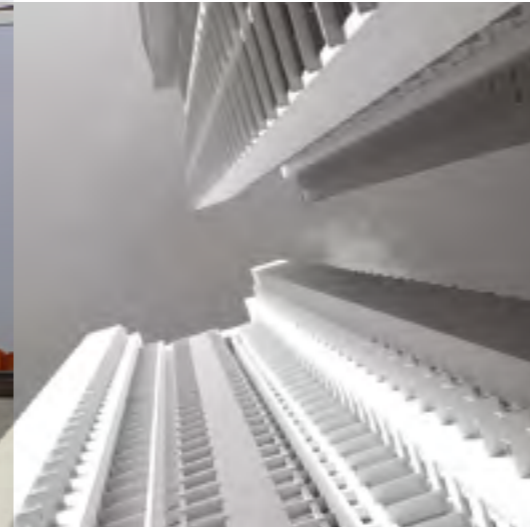
# Architectural Windows

## AGS 950 Series Sliding Window



The AGS 950 Series Sliding Window system has been developed as a complimentary product to the AGS 900 Series Sliding Door, both providing excellent structural performance. Engineered to deliver high strength, this window has been tested to cyclonic requirements and is capable of large sash sizes and numerous configurations.

Incorporating heavy duty roller hardware, twin point locking and integrated insect screening, the AGS 950 Series Sliding Window is ideally suited to applications where clean, modern aesthetics, high quality functionality and a range of performance options are demanded. Double glazing is also available for improved thermal comfort and performance.



### FEATURES INCLUDE:

- Ultra high performance design
- Tested to cyclonic requirements
- High performance roller and locking hardware
- Compatible with a range of Capral suites
- Extended product limitations for large configurations
- Slider over slider and slide-slide option

### PERFORMANCE

Wind Pressure	Ultimate Pressure	Water Penetration
up to 7000Pa	up to 10,000Pa	up to 800Pa

### FRAME SIZE

Depth	Height
<b>Narrowline</b>	
101.6mm	60mm & 80mm
<b>Flushline</b>	
100mm	80mm
150mm	80mm

### MAX. RECOMM. SIZE

<b>Height</b>	up to 1800mm
<b>Width</b>	up to 1200mm
<b>Weight</b>	up to 64kg

### ACOUSTICS

<b>RW</b>	36
<b>C,CTR</b>	(-1;-3)

### GLAZING CAPACITY

<b>Single Glaze</b>	4mm - 10mm
<b>Double Glaze</b>	22mm & 25mm

### WINDOW ENERGY RATINGS\*

Single Glazed		Total Window - AFRC			
Window ID	Glazing	Uw	SHGC	Tvw	Air Inf.
CAP-064-01	6mm Clear	6.5	0.59	0.60	0.23
CAP-064-05	6mm Energy Tech	5.1	0.50	0.56	0.23
CAP-064-07	6.38mm ComfortPlus Neutral	5.1	0.38	0.40	0.23
Double Glazed		Total Window - AFRC			
CAP-065-01	6mm Clear 12mm Air Gap 6mm Clear	4.4	0.51	0.54	0.23
CAP-065-07	6.38mm Comfort Plus Clear 12mm Air Gap 6mm Clear	3.9	0.44	0.50	0.23
CAP-065-16	6mm Energy Advantage 12mm Argon Gap 6mm Clear	3.8	0.45	0.50	0.23

### CONFIGURATIONS

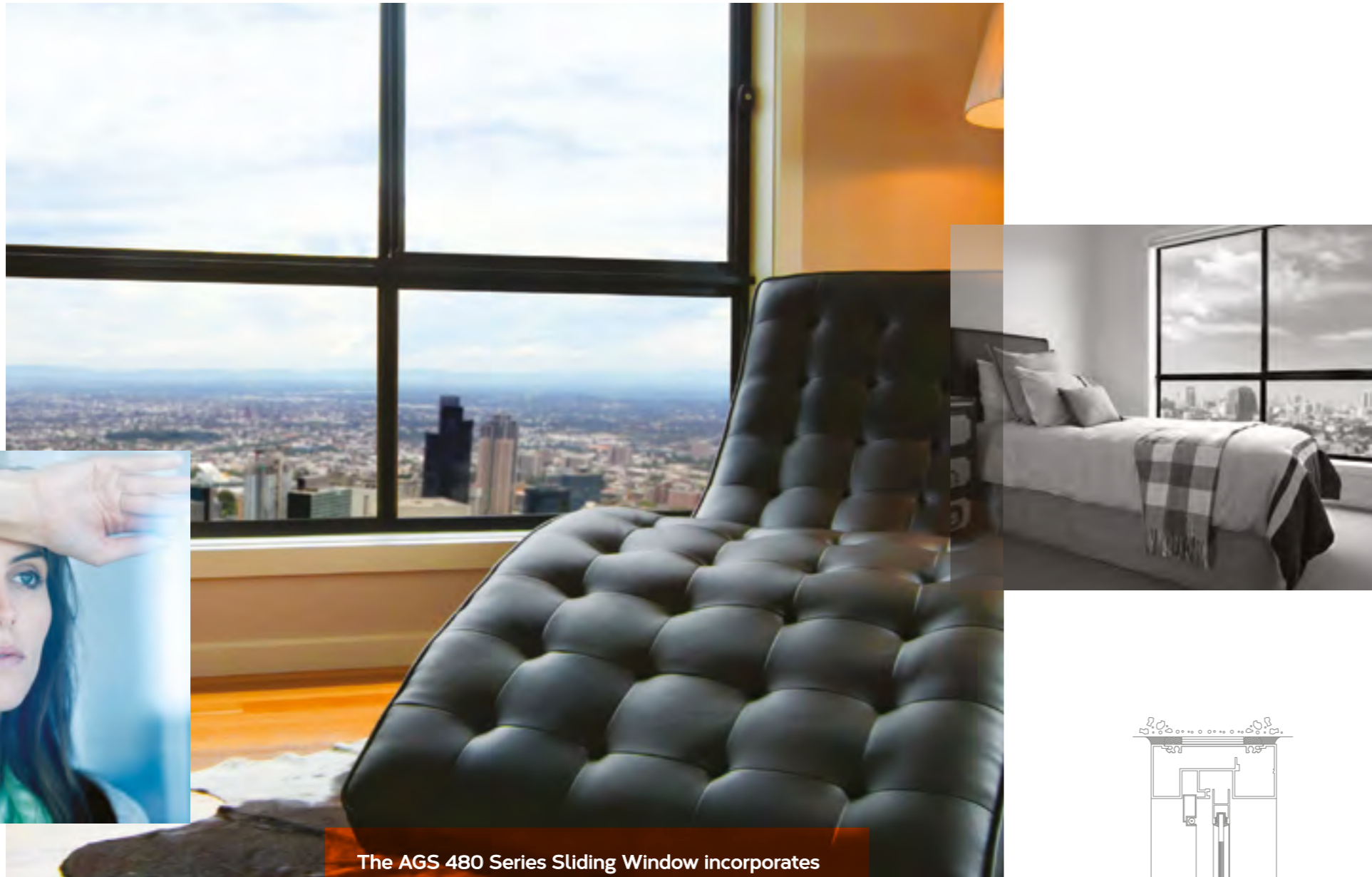


\*Log on to [www.wers.net](http://www.wers.net) to view the full Capral AFRC product directory



# Architectural Windows

## AGS 480 Series Sliding Window



### FEATURES AND BENEFITS:

- Bold 101.6mm outer frame
- Single and double glazed options
- Slider-over-slider functionality
- Integrated head and sill design for neat, clean appearance
- Adjustable rollers and height adjustable lockable latching option
- Integrated insect and security screening options
- Compatible with a range of Capral suites

### PERFORMANCE

Serviceability	Ultimate Pressure	Water Penetration
up to 4500Pa	up to 11,000Pa	up to 600Pa

### FRAME SIZE

Depth	Height
101.6mm	44mm

### MAX. RECOMMENDED SIZE

Height	Width	Weight
up to 1500mm	up to 1200mm	up to 42kg

### ACOUSTICS

RW	32
C,CTR	(0;-2)

### GLAZING CAPACITY

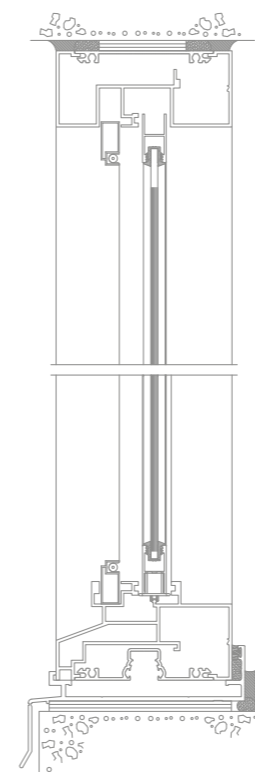
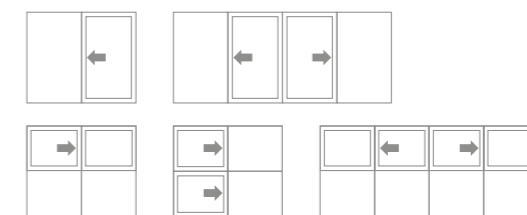
Single Glaze	3mm - 6mm
Double Glaze	14mm - 18mm

### WINDOW ENERGY RATINGS\*

Single Glazed		Total Window - AFRC			
Window ID	Glazing	Uw	SHGC	Tvw	Air Inf.
CAP-028-01	4mm Clear	7.0	0.69	0.71	0.61
CAP-028-03	6.38mm Clear Laminate	6.9	0.66	0.70	0.61
CAP-028-05	6.38mm Comfort Plus Neutral	5.3	0.42	0.47	0.61

Double Glazed		Total Window - AFRC			
Window ID	Glazing	Uw	SHGC	Tvw	Air Inf.
CAP-027-01	4mm Clear 10mm Air Gap 4mm Clear	4.8	0.56	0.58	0.61
CAP-027-06	4mm Energy Tech 10mm Argon Gap 4mm Clear	4.0	0.51	0.54	0.61
CAP-027-07	6.38mm Comfort Plus Neutral 6mm Argon Gap 4mm Clear	4.3	0.34	0.38	0.61

### CONFIGURATIONS



The AGS 480 Series Sliding Window incorporates the features and flexibility of a residential window system into the commercial grade AGS 400 Series Narrowline Framing System.

The AGS 480 Series Sliding Window is particularly suited to architectural applications where a more substantial, commercial appearance is desired. This window delivers a neat and streamlined appearance with squared mullion and glazing bead.

With the use of adaptors, it can also be double glazed to offer an enhanced level of thermal comfort and performance and delivers sliding sash functionality in a modern and bold external framing system.



\*Log on to [www.wers.net](http://www.wers.net) to view the full Capral AFRC product directory



# Architectural Windows

## Futureline Sliding Window



Utilising the latest in European thermal break technology, the Futureline Sliding Door and Window have been designed to compliment the rest of the Futureline range with outstanding energy ratings, crisp and clean lines, and high quality hardware.

Utilising the same frame and sash, the Sliding Window only differs in the operational hardware, making a very versatile and adaptable system. Along with the outer frame, the 45mm deep sash has been designed with energy performance in mind by utilising a combination of both multi-hollow and double bar polyamide strips.

The handle design completes the door by providing an architectural finish that will look the part in any project.



### FEATURES AND BENEFITS:

- Outstanding 'Uw' values down to 2.6
- Industry standard 100mm frame with strong 45mm deep panels
- 102mm sash 'face' gives a strong architectural aesthetic with an 84mm midrail available as an option
- Mitred frame and sash corner construction with high quality hardware
- Fixed-Slide (OX), Slide-Slide (XX) and Fixed-Slide-Slide-Fixed (OXXO) configurations with stacking option available on request

### PERFORMANCE

Serviceability	Ultimate Pressure	Water Penetration
up to 1200Pa	up to 3000Pa	up to 450Pa

### FRAME SIZE

Depth	100mm
Height	47.5mm

### MAX. RECOMMENDED SIZE

Height	2000mm
Width	2400mm
Weight	200kg

### ACOUSTICS

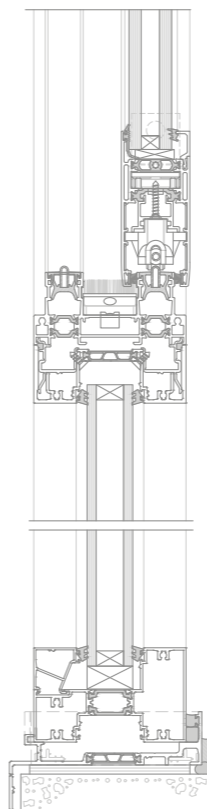
RW	33
C,CTR	(0;-2)

### GLAZING CAPACITY

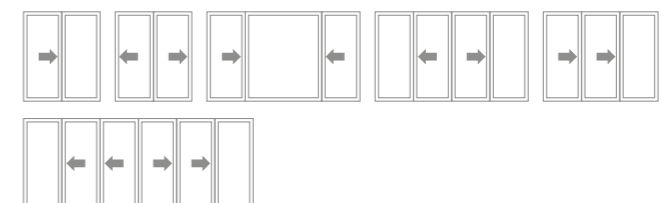
Double Glaze	24mm - 34mm
--------------	-------------

### WINDOW ENERGY RATINGS\*

Window ID	Glazing	Total Window - AFRC			
		Uw	SHGC	Tvw	Air Inf.
CAP-132-01	6mm Clear 12mm Air Gap 6mm Clear	3.3	0.38	0.39	0.70
CAP-132-02	6mm Energy Tech 12mm Air Gap 6mm Clear	2.9	0.33	0.36	0.70
CAP-132-03	24mm Insulglass Max 564 Air	2.8	0.16	0.32	0.70
CAP-132-10	6.38mm Comfort Plus Clear 12mm Argon Gap 6mm Clear	2.7	0.32	0.36	0.70
CAP-132-11	6mm Grey 12mm Air Gap 6mm Clear	3.3	0.25	0.18	0.70
CAP-132-13	Lightbridge Grey SO 5/12/5	2.6	0.21	0.23	0.70



### CONFIGURATIONS



\*Log on to [www.wers.net](http://www.wers.net) to view the full Capral AFRC product directory



# Architectural Windows

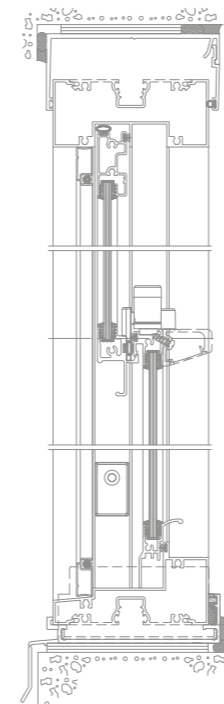
## AGS 471 Double Hung Window



The AGS 471 Double Hung window incorporates the features and flexibility of a residential window system into the commercial grade AGS 400 Narrowline framing system.

The AGS 471 Double Hung is particularly suited to architectural applications where a more substantial, commercial appearance is desired. Featuring a 200 Pascal water performance and accepting single glazing up to 6.38mm, the AGS 471 Double Hung also incorporates standard features such as full width integrated finger pulls on the upper and lower sashes which aid the ease of operation and delivers double sash functionality in a modern and bold external framing system.

single glaze



### FEATURES AND BENEFITS:

- Bold 101.6mm outer frame for commercial and architectural applications
- Integrated head and sill design for neat, clean appearance
- Lockable hardware options
- Continuous integrated finger pulls for ease of operation
- Compatible with a range of AGS suites
- Screening system integrated into frame

### PERFORMANCE

Serviceability	Ultimate Pressure	Water Penetration
up to 4500Pa <sup>†</sup>	up to 7000Pa <sup>†</sup>	up to 200Pa

### FRAME SIZE

Depth	101.6mm
Height	44mm

### MAX. RECOMMENDED SIZE

Height	up to 2400mm
Width	up to 1200mm
Weight	up to 18kg

### ACOUSTICS

RW	31 <sup>†</sup>
C,CTR	(-1;-1) <sup>†</sup>

### GLAZING CAPACITY

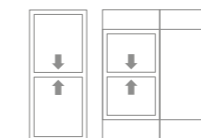
Single Glaze	3mm - 6mm
--------------	-----------

<sup>†</sup>Performance taken from 581 Double Hung Window

### WINDOW ENERGY RATINGS\*

Window ID	Glazing	Total Window - AFRC			
		Uw	SHGC	Tvw	Air Inf.
CAP-070-01	4mm Clear	6.5	0.67	0.68	0.39
CAP-070-02	6mm Azuria TS21	5.7	0.23	0.12	0.39
CAP-070-03	6mm Super Grey	6.4	0.29	0.07	0.39
CAP-070-04	6.38mm Comfort Plus Neutral	4.8	0.41	0.45	0.39
CAP-070-05	6.38mm Comfort Plus Grey	4.8	0.40	0.30	0.39
CAP-070-06	6.38mm Clear Laminate	6.4	0.64	0.68	0.39
CAP-070-07	6.38mm Grey Laminate	6.3	0.50	0.34	0.39

### CONFIGURATIONS

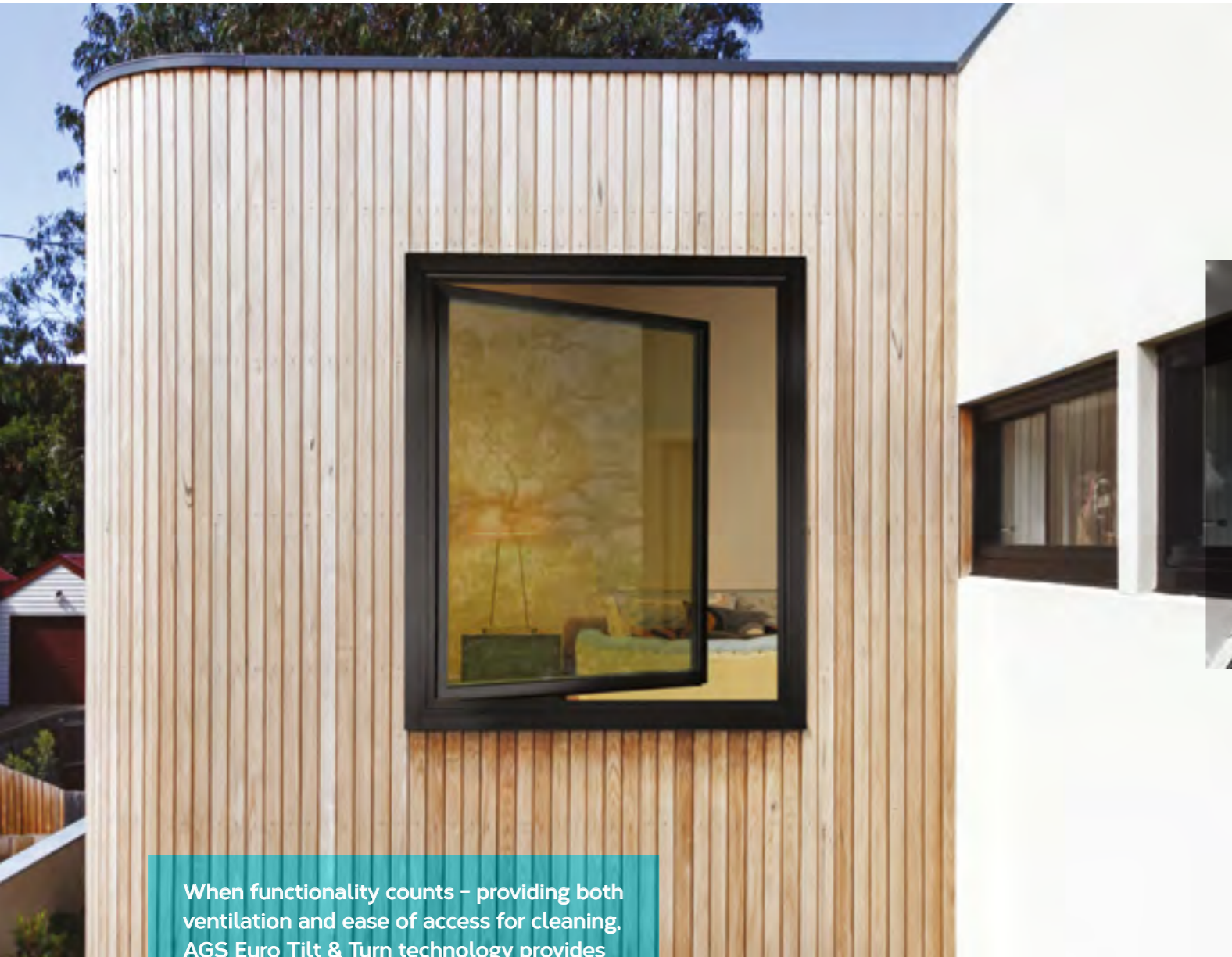


\*Log on to [www.wers.net](http://www.wers.net) to view the full Capral AFRC product directory



# Architectural Windows

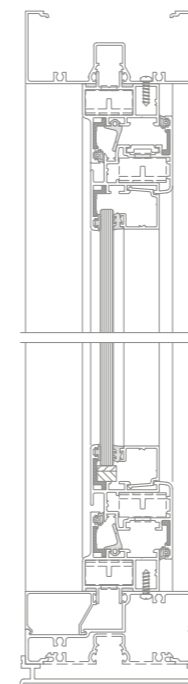
## AGS Euro Tilt and Turn Window



When functionality counts – providing both ventilation and ease of access for cleaning, AGS Euro Tilt & Turn technology provides an ideal solution for a common problem.

Opening to the inside, the AGS Euro Tilt & Turn hinges from the bottom for ventilation and from the side (like an internal casement) for cleaning access. Access for cleaning can be locked to prevent unauthorised opening which is ideal in a multi-story apartment or hotel complex.

The Euro's multi-point locking provides excellent structural performance allowing its use in high wind cyclonic areas.



### FEATURES AND BENEFITS:

- Single and Double Glazed Options (up to 27mm)
- Standard and high performance configurations using sub frame system
- European designed components and hardware to improve functionality and adjustability
- Multiple and adjustable locking points
- Option for screening system integrated into frame
- Inward opening allows for ease of cleaning

### PERFORMANCE

Serviceability	Ultimate Pressure	Water Penetration
up to 4500Pa	up to 8000Pa	up to 700Pa

### FRAME SIZE

Depth	Height
†Adapts to Commercial Framing	

### MAX. RECOMMENDED SIZE

Height	Width	Weight
up to 2400mm	up to 1300mm	up to 80kg

### ACOUSTICS

RW	38
C,CTR	(-1;-3)

### GLAZING CAPACITY

Single Glaze	4mm - 10mm
Thick Glaze	11mm - 18mm
Double Glaze	19mm - 27mm

### WINDOW ENERGY RATINGS\*

Single Glazed		Total Window - AFRC			
Window ID	Glazing	Uw	SHGC	Tvw	Air Inf.
CAP-120-01	4mm Clear	6.5	0.43	0.41	0.58
CAP-120-03	6mm SolarPlus TS21 on Azurlite	6.1	0.17	0.07	0.58
CAP-120-04	6.38mm Comfort Plus Neutral	5.6	0.28	0.27	0.58
Double Glazed		Total Window - AFRC			
Window ID	Glazing	Uw	SHGC	Tvw	Air Inf.
CAP-121-01	5mm Clear 10mm Argon Gap 5mm Clear	5.0	0.37	0.36	0.58
CAP-121-02	6mm Energy Tech 12mm Air Gap 6mm Clear	4.7	0.32	0.33	0.58
CAP-121-04	LightBridge Clear S0 5/12/5	4.6	0.30	0.36	0.58

### CONFIGURATIONS



\*Log on to [www.wers.net](http://www.wers.net) to view the full Capral AFRC product directory



# Architectural Windows

## Capral 125 Louvre Frame



The 125 Louvre frame has the ability to house many different styles of louvre blades including wood, glass and the exclusive curved aluminium louvre blade which Capral produces.

For those with high exposure to insects, flyscreens can be fitted externally to avoid pests entering the interior of the building.



### FEATURES AND BENEFITS:

- Ability to house different styles of louvre blades, including glass, wood and the exclusive Capral curved aluminium louvre blade.
- Can be fitted with external flyscreens

### PERFORMANCE

Serviceability	Ultimate Pressure	Water Penetration
up to 4700Pa	up to 5100Pa	up to 400Pa

### FRAME SIZE

Depth	125mm
-------	-------

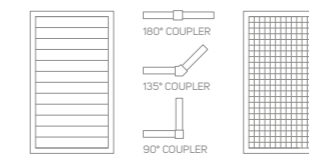
### MAX. RECOMMENDED SIZE

Gallery Height	up to 2470mm
Blade Width	up to 900mm

### SINGLE GLAZING CAPACITY

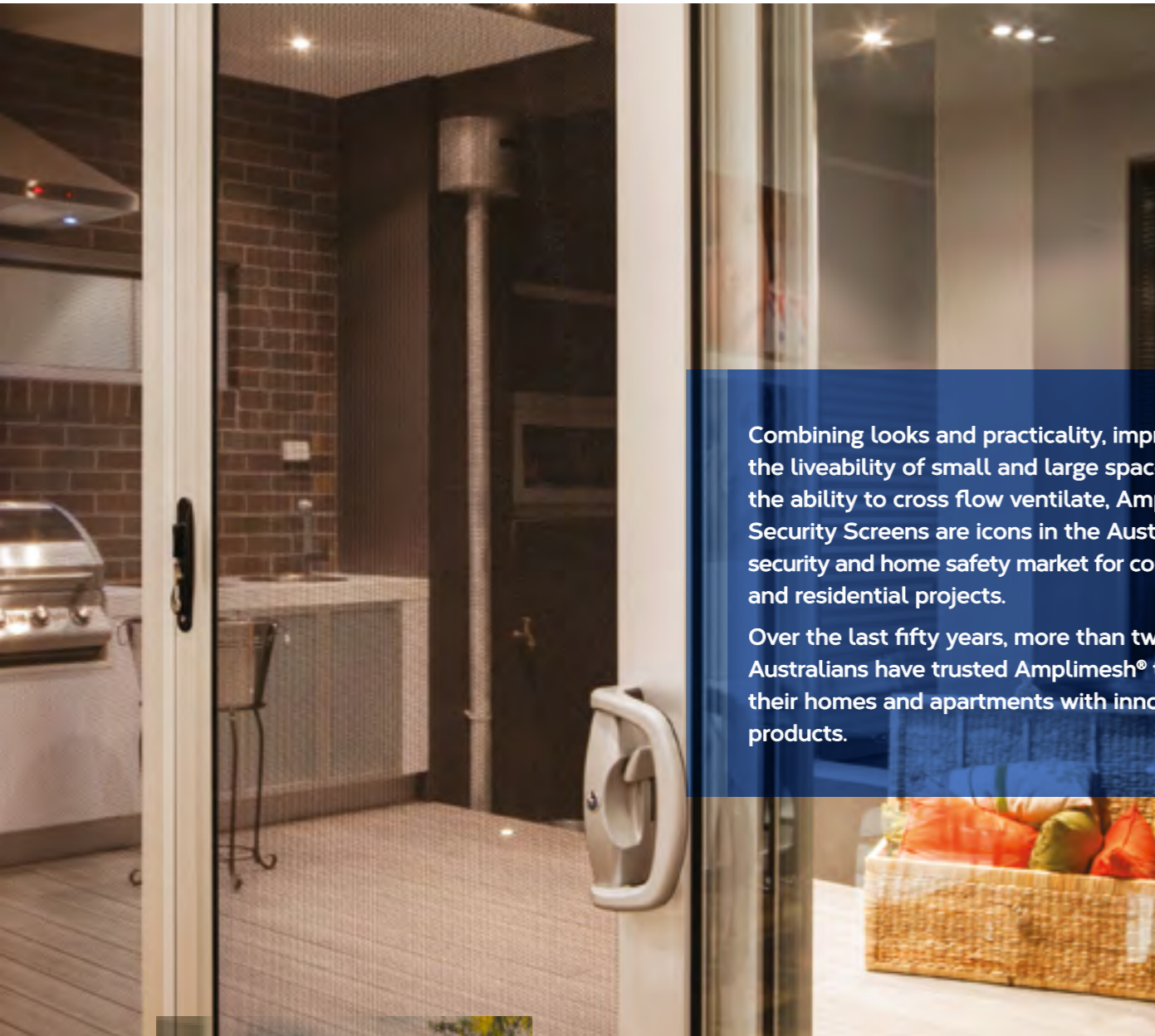
6mm Glass
162mm Louvre Blade
102mm Aluminium Blade
152mm Aluminium Blade

### CONFIGURATIONS



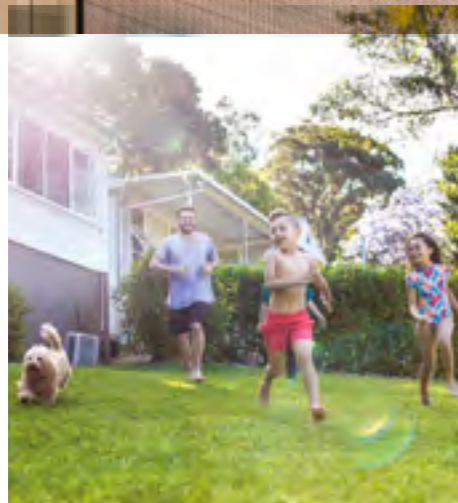
# Screening Systems

## Amplimesh Security Screens



Combining looks and practicality, improving the liveability of small and large spaces with the ability to cross flow ventilate, Amplimesh® Security Screens are icons in the Australian security and home safety market for commercial and residential projects.

Over the last fifty years, more than two million Australians have trusted Amplimesh® to secure their homes and apartments with innovative products.



### FEATURES AND BENEFITS:

- A woven wire security screen with the translucent appearance of a flyscreen constructed with high-tensile 316 marine grade stainless steel
- Multiple configurations and lifestyle options for alfresco areas
- Australian Security Standard compliant with a finer high-tensile mesh for a clearer view
- Unique safety options such as escape and fall prevention screens
- No internal visible security fixings – giving a designer look and feel
- No screws/clamps penetrating through the face of the Stainless Steel mesh ensuring long lifespan
- One dual purpose PVC 'wrap around' pressure fit co-extrusion for mesh retention and the ultimate protection from dissimilar metal galvanic corrosion
- WERS rated on generic industry typical aluminium residential and commercial windows for building energy efficiency
- Access to glass for ease of cleaning

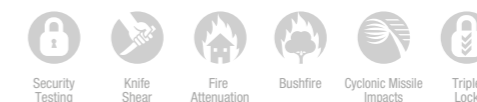
### WINDOW ENERGY RATINGS - RESIDENTIAL\*

Single Glazed <sup>†</sup>		Total Window - AFRC			
Window ID	Glazing	Uw	SHGC	Tvw	Air Inf.
CAP-901-01	3mm Clear	5.7	0.37	0.33	5.00
CAP-901-02	6.38mm Low E	4.5	0.30	0.30	5.00
CAP-901-03	5mm Toned	5.6	0.31	0.18	5.00
CAP-901-04	5mm Super Toned	5.6	0.30	0.08	5.00
Double Glazed <sup>†</sup>		Total Window - AFRC			
CAP-902-01	3mm Clear 6mm Air Gap 3mm Clear	4.5	0.32	0.29	5.00
CAP-902-02	3mm Clear 12mm Air Gap 3mm Clear	4.2	0.32	0.29	5.00
CAP-902-03	3mm Clear 12mm Air Gap 4mm Low E	3.7	0.29	0.27	5.00
CAP-902-04	5mm Super Toned 6mm Air Gap 5mm Clear	4.5	0.18	0.04	5.00

<sup>†</sup>Fitted to a generic industry typical aluminium window

### PRODUCT OPTIONS INCLUDE

- Security Entrance Doors
- Security Sliding Doors
- Security Double Doors
- Security Folding Doors
- Security Fixed Window Screens
- Security Fire Egress Window Screens
- Fall prevention screens

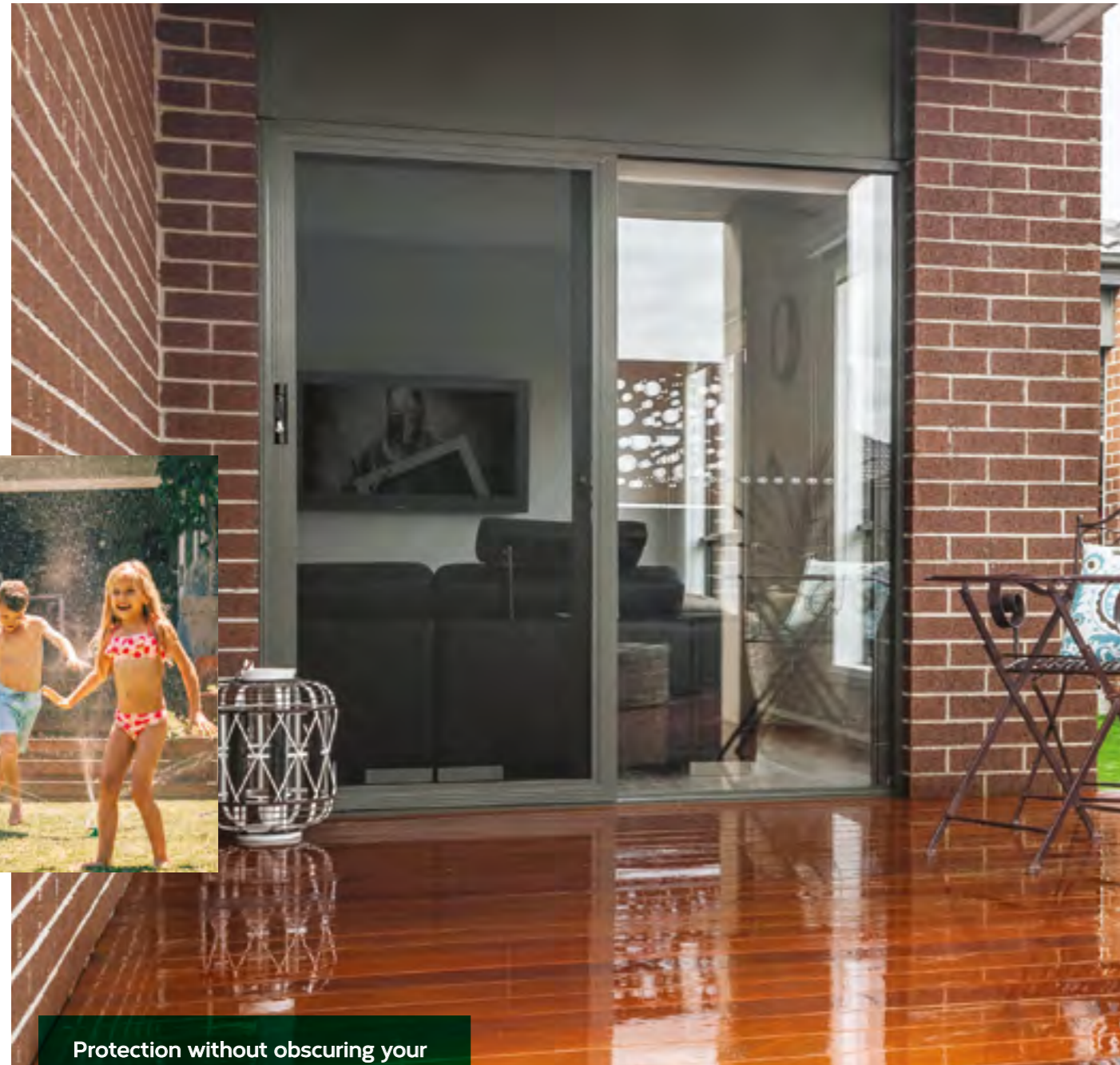


\*Log on to [www.wers.net](http://www.wers.net) to view the full Capral AFRC product directory



# Screening Systems

## IntrudaGuard Security Screens



### FEATURES AND BENEFITS:

- Durable and corrosion-resistant, the IntrudaGuard® shield is made from a single sheet of specially tempered marine grade aluminium with a distinctive perforated design making it not only corrosion resistant but easy to maintain
- Australia's First Perforated Aluminium Security Screen boasting a class-topping 119° viewing angle
- Assembled using a revolutionary bonding process eliminating the need for any unsightly fixings to secure the mesh
- Suitable as a Fall Prevention Screen option
- IntrudaGuard® Security Screens are rigorously tested to meet Australian standards. They are strong, practical and affordable
- WERS rated on generic industry typical aluminium residential and commercial windows for building energy efficiency

### WINDOW ENERGY RATING - RESIDENTIAL\*

Single Glazed <sup>†</sup>		Total Window - AFRC			
Window ID	Glazing	Uw	SHGC	Tvw	Air Inf.
CAP-905-01	3mm Clear	6.3	0.36	0.31	5.00
CAP-905-02	5mm Toned	6.3	0.29	0.17	5.00
CAP-905-03	5mm Super Toned	6.3	0.28	0.07	5.00
CAP-905-04	6.38mm Low E	5.0	0.28	0.28	5.00
Double Glazed <sup>†</sup>		Total Window - AFRC			
CAP-906-01	3mm Clear 6mm Air Gap 3mm Clear	5.1	0.30	0.27	5.00
CAP-906-02	3mm Clear 12mm Air Gap 3mm Clear	4.7	0.29	0.27	5.00
CAP-906-03	5mm Super Toned 6mm Air Gap 5mm Clear	5.0	0.17	0.04	5.00
CAP-906-04	3mm Clear 12mm Air Gap 4mm Low E	4.2	0.27	0.25	5.00

<sup>†</sup>Fitted to a generic industry typical aluminium window

### PRODUCT OPTIONS INCLUDE

- Security Entrance Doors
  - Security Sliding Doors
  - Security Double Doors
  - Security Folding Doors<sup>#</sup>
  - Security Fixed Window Screens
  - Security Fire Egress Window Screens<sup>#</sup>
  - Fall prevention screens
- <sup>#</sup>Available from Authorised Amplimesh Dealers



\*Log on to [www.wers.net](http://www.wers.net) to view the full Capral AFRC product directory



Protection without obscuring your view. IntrudaGuard's® perforated aluminium screen boasts a class-topping 125° viewing angle making it suitable for windows and door. Designed and tested to withstand a wide range of impact-based attacks and with an all Aluminium framing system, IntrudaGuard® prevents any galvanic corrosion from occurring and increases the life of your screen.







## Capral Framing Systems

Framing systems are the foundation behind panoramic views, natural light, wide or tall expanses of glass, integration of doors and windows, and a myriad of glass options for energy or aesthetic requirements. Capral framing systems have one thing in common – they can do it all.

From the centre glazed 400 Narrowline to the front glazed 419 Flushline, the selected framing systems in the Capral Architectural Series offer maximum flexibility and performance in your project.

And if your project is after that something even a little bit more special, our Curtain Wall systems are ideal for feature or strip walls.

If one of the selected framing systems in the Capral Apartment Collection isn't quite what you require, why not talk to us further as we have a range of other framing systems including larger, smaller or sound proofing options.

# Framing Systems

## AGS 400 & 425 Narrowline Framing Systems



The AGS 400 & 425 Narrowline framing systems have set the standard for centre glazed framing for over two decades. With an aesthetically balanced look, the AGS 400 & 425 Narrowline are amongst the most versatile and adaptable framing systems in the range.

With a multitude of compatible window and door suites, the AGS 400 & 425 Narrowline framing systems offer enormous design flexibility making these products ideal for commercial or residential projects that require a bold modern look and high levels of structural performance.

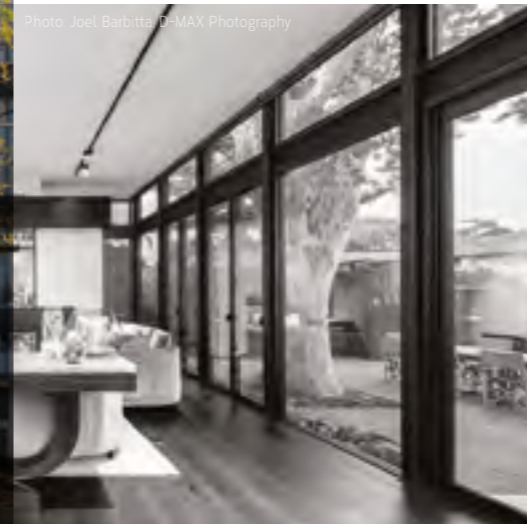


Photo: Joel Barbitta D-MAX Photography



### FEATURES AND BENEFITS:

- Centre glazed framing system - AGS 400 = 101.6mm x 44mm and AGS 425 = 101.6mm x 50mm
- Suits most commercial or architectural applications
- AGS 400 supports single glazing
- AGS 425 supports double and single glazing
- Crisp, narrow unbroken lines for clean aesthetics
- Captive glazing wedge options for easier on-site glazing
- Flexible design with a range of mullion and transom options
- A wide range of compatible AGS window and door suites

### PERFORMANCE

Serviceability	Ultimate Pressure	Water Penetration
up to 5200Pa	up to 10,300Pa	up to 1500Pa

### FRAME SIZE

AGS	Depth	Height
400	101.6mm	28mm
400	101.6mm	44mm
425	101.6mm	50mm

### MAX. RECOMMENDED SIZE

Mullion Height	up to 4000mm
Mullion Spacing	up to 2400mm

### ACOUSTICS

AGS	RW	C,CTR
400	37	(0;-3)
425	41	(-2;-6)

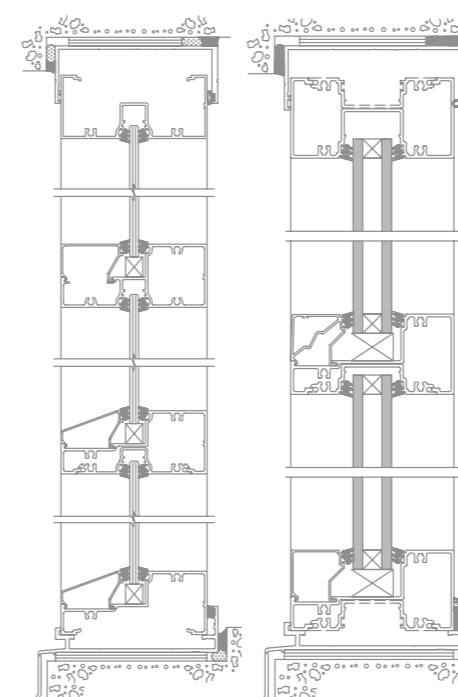
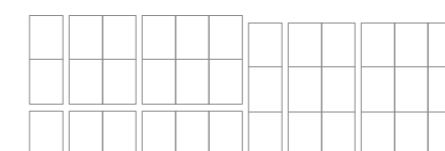
### GLAZING CAPACITY

AGS 400	Single	5mm - 10mm
AGS 425	Single	6mm - 10mm
	Thick	12mm - 16mm
	Double	18mm - 30mm

### WINDOW ENERGY RATINGS\*

AGS 400 - Single Glazed		Total Window - AFRC			
Window ID	Glazing	Uw	SHGC	Tvw	Air Inf.
CAP-062-01	6mm Clear	6.0	0.75	0.80	0.04
CAP-062-09	6mm Eclipse Advantage Clear	4.3	0.57	0.60	0.04
CAP-062-14	6.38mm Comfort Plus Neutral	4.2	0.47	0.53	0.04
AGS 425 - Double Glazed		Total Window - AFRC			
CAP-063-01	6mm Clear 12mm Air Gap 6mm Clear	3.5	0.64	0.71	0.04
CAP-063-64	6mm Eclipse Advantage Clear 12mm Argon Gap 6mm Energy Advantage	2.5	0.48	0.50	0.04
CAP-063-75	6.38mm Comfort Plus Clear 12mm Argon Gap 6mm Clear	2.6	0.55	0.66	0.04

### CONFIGURATIONS



AGS 400 Single Glaze AGS 425 Double Glaze

\*Log on to [www.wers.net](http://www.wers.net) to view the full Capral AFRC product directory



# Framing Systems

## 450 Narrowline Wide DG Framing System



### FEATURES AND BENEFITS:

- Dedicated wide pocket double glazed 101.6mm x 55mm centre glazed frame
- Glazing pocket accepts 31 to 44mm glass or 12 to 31mm using inlay beads
- Ideal for health projects where double glazed venetians have been specified
- Suits most commercial or architectural applications requiring improved thermal characteristics
- Crisp, narrow unbroken lines for clean aesthetics
- Captive glazing wedge options for easier on-site glazing

### PERFORMANCE

Serviceability	Ultimate Pressure	Water Penetration
up to 4500Pa	up to 10,000Pa	up to 900Pa

### FRAME SIZE

Depth	101.6mm
Height	55mm

### MAX. RECOMMENDED SIZE

Height	4000mm
Width	2400mm

### ACOUSTICS

RW	41 <sup>†</sup>
C,CTR	(-2;-6) <sup>†</sup>

<sup>†</sup>Based on 425 results

### GLAZING CAPACITY

50mm pocket	31mm - 44mm
37mm pocket	18mm - 31mm
31mm pocket	12mm - 25mm

### WINDOW ENERGY RATINGS\*

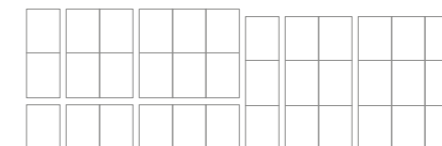
AGS 450 - Double Glazed Total Window - AFRC

Window ID	Glazing	Uw	SHGC	Tvw	Air Inf.
CAP-111-01	13.52mm SolarE Grey 8mm Argon Gap 11.52mm Energy Tech	2.7	0.23	0.20	0.20
CAP-111-02	12.76mm Clear Laminated 12mm Argon Gap 6mm Solarban 70XL Starphire	2.4	0.33	0.55	0.20

AGS 450 - Triple Glazed Total Window - AFRC

CAP-112-01	6mm Energy Tech 12mm Argon Gap 6mm Energy Tech 12mm Argon Gap 6mm Clear	1.9	0.46	0.54	0.20
CAP-112-02	6mm Clear / 12mm Air Gap 6mm Clear / 12mm Air Gap 6mm Clear	2.6	0.57	0.62	0.20

### CONFIGURATIONS



\*Log on to [www.wers.net](http://www.wers.net) to view the full Capral AFRC product directory



The AGS 450 Narrowline has been designed with extra wide glazing pockets to accept double glazed units with internal venetian blinds commonly used in health projects, extra thick glazing specified due to impact requirements or triple glazing for increased energy efficiency requirements.

Accepting glazing up to an amazing 44mm wide or down to a standard 12mm with the addition of inlay beads, the AGS 450 Narrowline offers great flexibility if necessary.

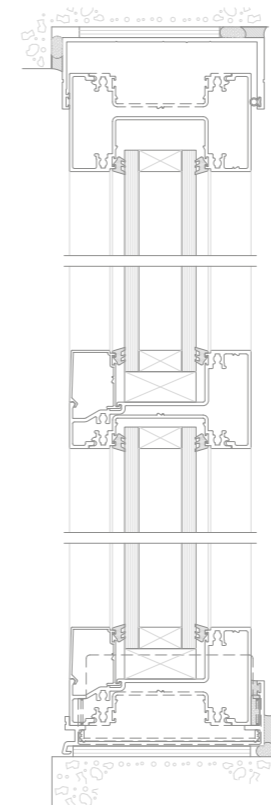


Photo: Joel Barbita, D-MAX Photography

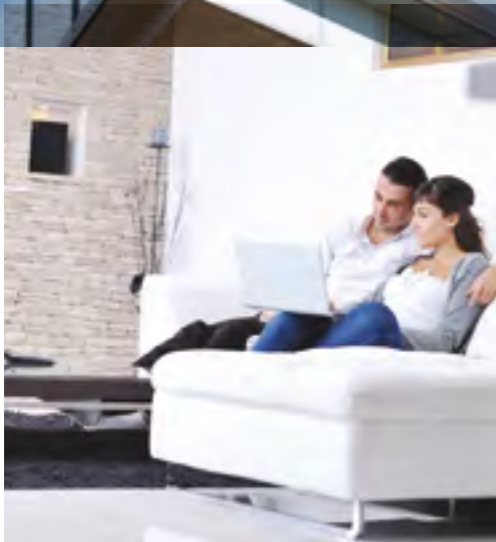
# Framing Systems

## AGS 419 Flushline Framing System



The AGS 419 Flushline is a flush glazed framing system offering a clean and modern external appearance. With a range of frame depths including 100mm, 150mm and 250mm this suite offers the ultimate in design flexibility allowing the system to be scaled to the requirements of each project.

A uniform external appearance also allows various frame widths to be used whilst maintaining a consistent look. In addition to these features, the AGS 419 Flushline Framing System can incorporate structurally glazed mullion profiles and offers a number of operable door and window options.



### FEATURES AND BENEFITS:

- Suits most commercial or architectural applications
- Forward positioned glazing pocket for flush external finish
- Structurally glazed mullion and transom options
- A wide range of compatible Capral AGS window and door suites available
- Double glazed and thick glass options are also available in the 419 Flushline Double Glazed framing system

### PERFORMANCE

Serviceability	Ultimate Pressure	Water Penetration
up to 5700Pa	up to 15,000Pa	up to 1500Pa

### FRAME SIZE

419 Flushline	Depth	Height
Single Glaze	100mm 150mm	50mm 50mm
Double Glaze	100mm 150mm 250mm	55mm 55mm 55mm
Acoustic	150mm	50mm

### MAX. RECOMMENDED SIZE

Height	Width
up to 6000mm	up to 2400mm

### GLAZING CAPACITY

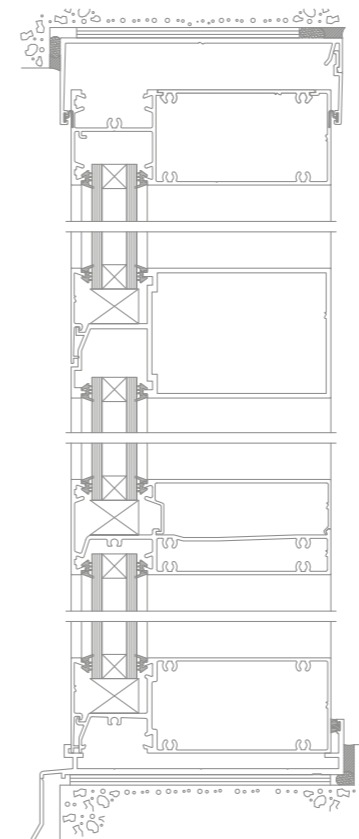
Single Glaze	6mm - 12mm
Thick Glaze	12mm - 18mm
Double Glaze	24mm - 28mm
Triple Glaze	35mm - 41mm

### ACOUSTICS (MAX)

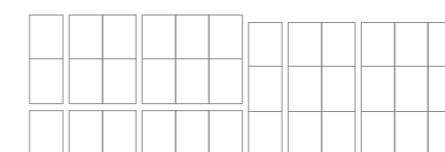
419 Flushline	RW	C,CTR
Double Glaze	40	(-2;-6)
Acoustic	50	(-3;-8)

### WINDOW ENERGY RATINGS\*

100mm Single Glazed		Total Window - AFRC			
Window ID	Glazing	Uw	SHGC	Tvw	Air Inf.
CAP-058-01	6mm Clear	6.1	0.75	0.79	0.17
CAP-058-09	6mm Eclipse Advantage Clear	4.4	0.57	0.60	0.17
CAP-058-14	6.38mm Comfort Plus Neutral	4.3	0.47	0.53	0.17
100mm Double Glazed		Total Window - AFRC			
CAP-059-01	6mm Clear 12mm Air Gap 6mm Clear	3.6	0.64	0.69	0.09
CAP-059-14	6.38mm Comfort Plus Neutral 12mm Air Gap 6mm Clear	2.9	0.40	0.46	0.09
CAP-059-52	6mm Clear 12mm Argon Gap 6mm Energy Advantage	2.7	0.61	0.64	0.09



### CONFIGURATIONS

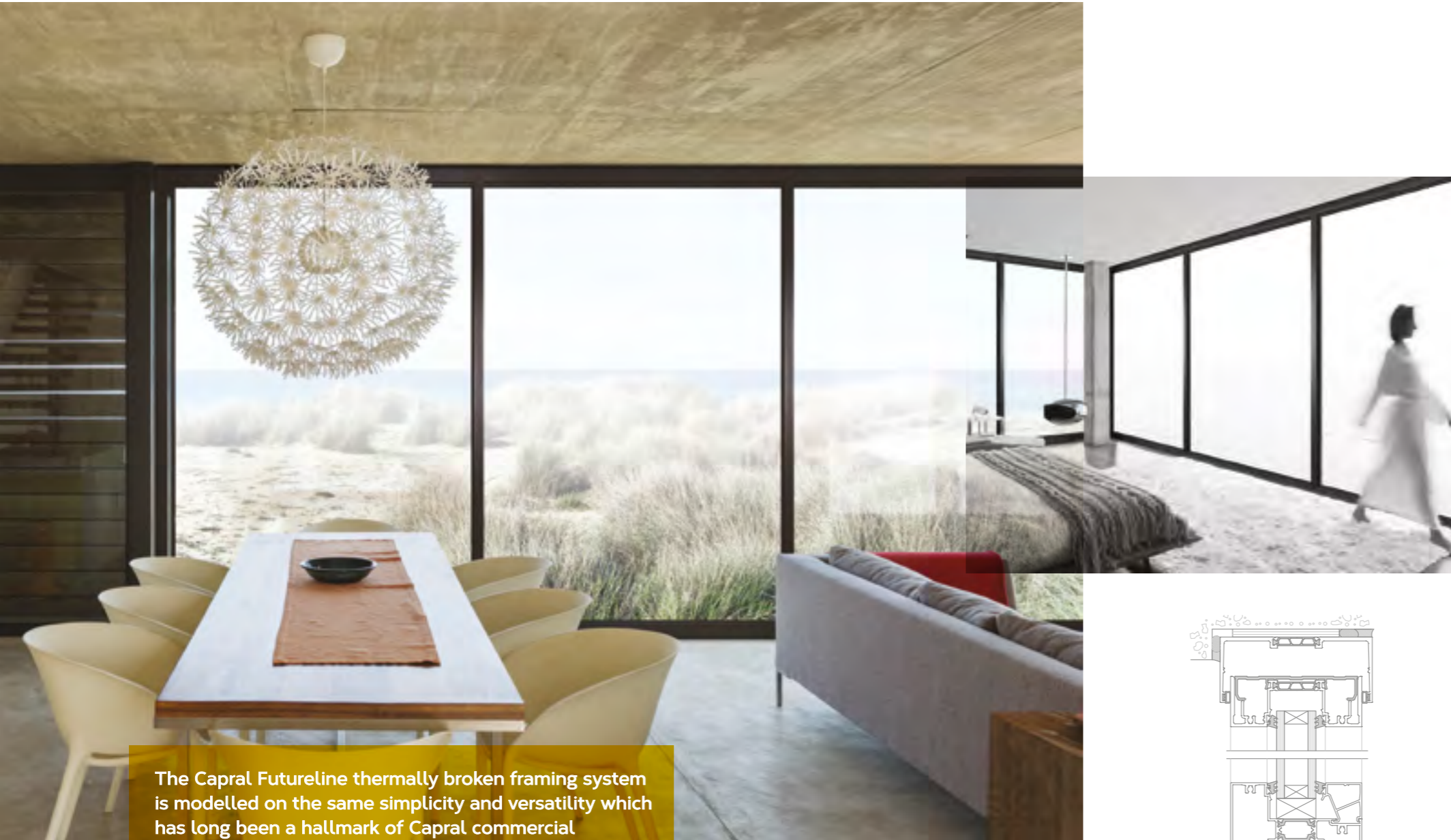


\*Log on to [www.wers.net](http://www.wers.net) to view the full Capral AFRC product directory



# Framing Systems

## Futureline 440TB Framing System



### FEATURES AND BENEFITS:

- Outstanding 'Uw' values down to 1.7
- 100mm x 62mm Centre Glazed Framing System
- Crisp, clean square profiles
- Capable of accommodating IGU's up to 34mm
- Thermally broken Sub Frames
- High Performance Glazing Bead System
- Made from Ecometal™
- Trickle Vent
- Compatible with Futureline Awning and Casement Window, Hinged Door, Sliding Window, Sliding Door and Lift & Slide Door Systems

### PERFORMANCE

Serviceability	Ultimate Pressure	Water Penetration
up to 4500Pa	up to 8500Pa	up to 900Pa

### FRAME SIZE

Depth	100mm
Height	62mm

### MAX. RECOMMENDED SIZE

Mullion Height	up to 4000mm
Mullion Spacing	up to 2400mm

### ACOUSTICS (MAX)

RW	41
C,CTR	(-2;-5)

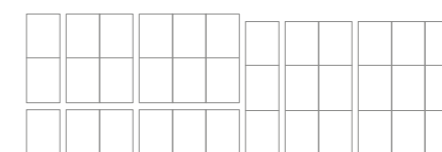
### GLAZING CAPACITY

Double Glaze	22mm - 34mm
--------------	-------------

### WINDOW ENERGY RATINGS\*

Window ID	Glazing	Total Window - AFRC			
		Uw	SHGC	Tvw	Air Inf.
CAP-113-01	6mm Clear 12mm Air Gap 6mm Clear	2.8	0.63	0.70	0.05
CAP-113-04	6mm Energy Tech 12mm Argon Gap 6mm Clear	2.0	0.55	0.64	0.05
CAP-113-05	24mm Insulglass Max 564 Ar	1.7	0.25	0.57	0.05
CAP-113-06	6.38mm Clear Laminate 12mm Air Gap 6mm Clear	2.8	0.61	0.70	0.05
CAP-113-15	6mm SolTech 12mm Argon Gap 6mm Clear	2.0	0.41	0.50	0.05
CAP-113-26	LightBridge Clear SO 5/12/5	1.8	0.33	0.37	0.05

### CONFIGURATIONS



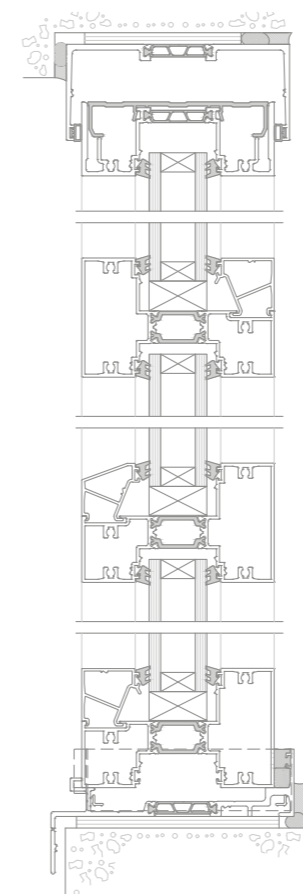
\*Log on to [www.wers.net](http://www.wers.net) to view the full Capral AFRC product directory



The Capral Futureline thermally broken framing system is modelled on the same simplicity and versatility which has long been a hallmark of Capral commercial framing systems. It incorporates the glazing capacity to accommodate high performance double glazed units while retaining the crisp, clean profiles typically associated with commercial glazing systems.

The use of the latest thermal break technologies including single bar multi-hollow and double bar polyamide strips have all been incorporated into the Futureline framing system to deliver excellent levels of thermal insulation.

The Capral Futureline framing system offers the best of both worlds; a strong architectural aesthetic with a level of thermal efficiency usually associated with narrower, less substantial framing systems.



# Framing Systems

## Futureline 419TB Framing System



The Futureline 419TB framing system incorporates the glazing capacity to accommodate high performance double glazed units while retaining the crisp, clean profiles typically associated with commercial glazing systems.

The use of the latest thermal break technologies including multi-hollow and double bar polyamide strips will deliver excellent levels of thermal insulation. Mullions and transoms have been designed to accommodate common modular construction methods, allowing it to be fabricated in a similar manner to non-thermally broken framing systems.

The Capral Futureline 419TB framing system offers the best of both worlds; a strong architectural aesthetic with a level of thermal efficiency usually associated with narrower, less substantial framing systems.



### FEATURES AND BENEFITS:

- Outstanding 'Uw' values down to 1.9
- 150mm x 62mm Front Glazed Framing System
- Modular frame construction
- Thermally broken sub frames
- Capable of accommodating IGU's up to 34mm
- Made from Ecometal™
- Trickle Vent
- Compatible with Futureline Hinged Door, and Awning and Casement Window Systems

### PERFORMANCE

Serviceability	Ultimate Pressure	Water Penetration
up to 4500Pa	up to 12,500Pa	up to 900Pa

### FRAME SIZE

Depth	150mm
Height	62mm

### MAX. RECOMMENDED SIZE

Mullion Height	up to 5400mm
Mullion Spacing	up to 2400mm

### ACOUSTICS (MAX)

RW	41
C,CTR	(-1;-5)

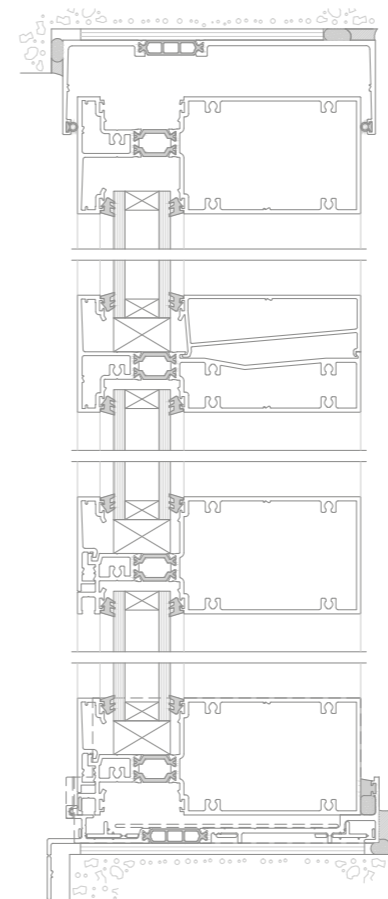
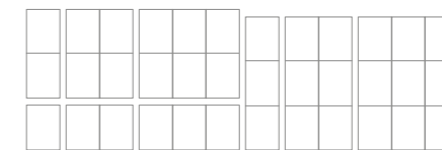
### GLAZING CAPACITY

Double Glaze	22mm - 34mm
--------------	-------------

### WINDOW ENERGY RATINGS\*

Window ID	Glazing	Total Window - AFRC			
		Uw	SHGC	Tvw	Air Inf.
CAP-141-01	6mm Clear 12mm Air Gap 6mm Clear	3.0	0.62	0.67	0.17
CAP-141-05	24mm Insulglass Max 564 Ar	1.9	0.20	0.26	0.17
CAP-141-06	6mm Energy Tech 12mm Argon Gap 6mm Clear	2.1	0.54	0.62	0.17
CAP-141-07	6.38mm Laminate Clear 12mm Air Gap 6mm Clear	3.0	0.60	0.68	0.17
CAP-141-10	6.38mm Comfort Plus Clear 12mm Argon Gap 6mm Clear	2.1	0.53	0.63	0.17

### CONFIGURATIONS



\*Log on to [www.wers.net](http://www.wers.net) to view the full Capral AFRC product directory



# Framing Systems

## AGS CW175 Curtain Wall Framing System

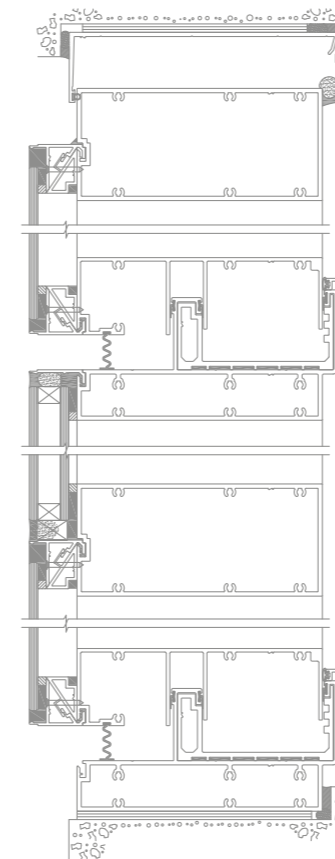


The AGS CW175 Curtain Wall Framing System has been developed to provide a robust and flexible curtain wall solution for small to mid-sized projects. While targeted at buildings up to a nominal 10 stories high, due to its superior design, it may be used on larger projects depending upon wind loads.

Among the many technical innovations and enhancements is its 4-sided structurally glazed design. This allows it to be configured in a flush, semi-frameless style or configured so that some or all of the aluminium profiles are visible from the outside.

The AGS CW175 Curtain Wall has met the strict AS4284 testing regime and the co-development of building and mullion brackets allow it to be installed as a fully tested integrated system without the need to engineer brackets and fixings separately.

Another key feature is the integration of sun shading directly into the Curtain Wall system without sacrificing structural or water performance. Proprietary brackets have been designed to allow the fitment of vertical or horizontal sunshades directly on the mullions for superior solar control.



### FEATURES AND BENEFITS:

- 175mm x 80mm frame
- 4-sided structural glazing offers maximum aesthetic flexibility
- Double glazed as standard with the ability to easily incorporate single glazed spandrel panels
- Can incorporate proprietary sun shade brackets integrated into the frame without sacrificing structural or water performance
- Proprietary building brackets provide for a fully tested system
- 90° Corner mullions and sun shade brackets available

### PERFORMANCE

Wind Pressure	Ultimate Pressure	Water Penetration
up to 3000Pa	up to 5000Pa	900Pa Static, 1800Pa Cyclic

### STANDARDS COMPLIANCE

Tested to AS4284, 2008

### FRAME SIZE

Depth	Height
175mm	80mm

### MAX. RECOMMENDED SIZE

Height	Width	Weight
up to 4500mm	up to 1500mm	up to 210kg

### STACK JOINT MOVEMENT

Horizontal	Vertical
10mm Nom. (+5, -10)	25mm Nom. (+5, -25)

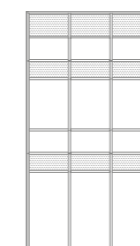
### GLAZING CAPACITY

Single Glaze	Double Glaze
6mm	28mm

### WINDOW ENERGY RATINGS\*

Window ID	Glazing	Total Window - AFRC			
		Uw	SHGC	Tvw	Air Inf.
CAP-117-01	6mm Clear 12mm Air Gap 6mm Clear	4.0	0.67	0.68	0.10
CAP-117-06	6.38mm Comfort Plus Clear 12mm Air Gap 6mm Clear	3.3	0.58	0.63	0.10
CAP-117-09	10.38mm Comfort Plus Clear 12mm Argon Gap 6mm Clear	3.1	0.54	0.61	0.10
CAP-117-12	6mm Performatech 12mm Argon Gap 6mm EnergyTech	2.9	0.29	0.47	0.10

### CONFIGURATIONS

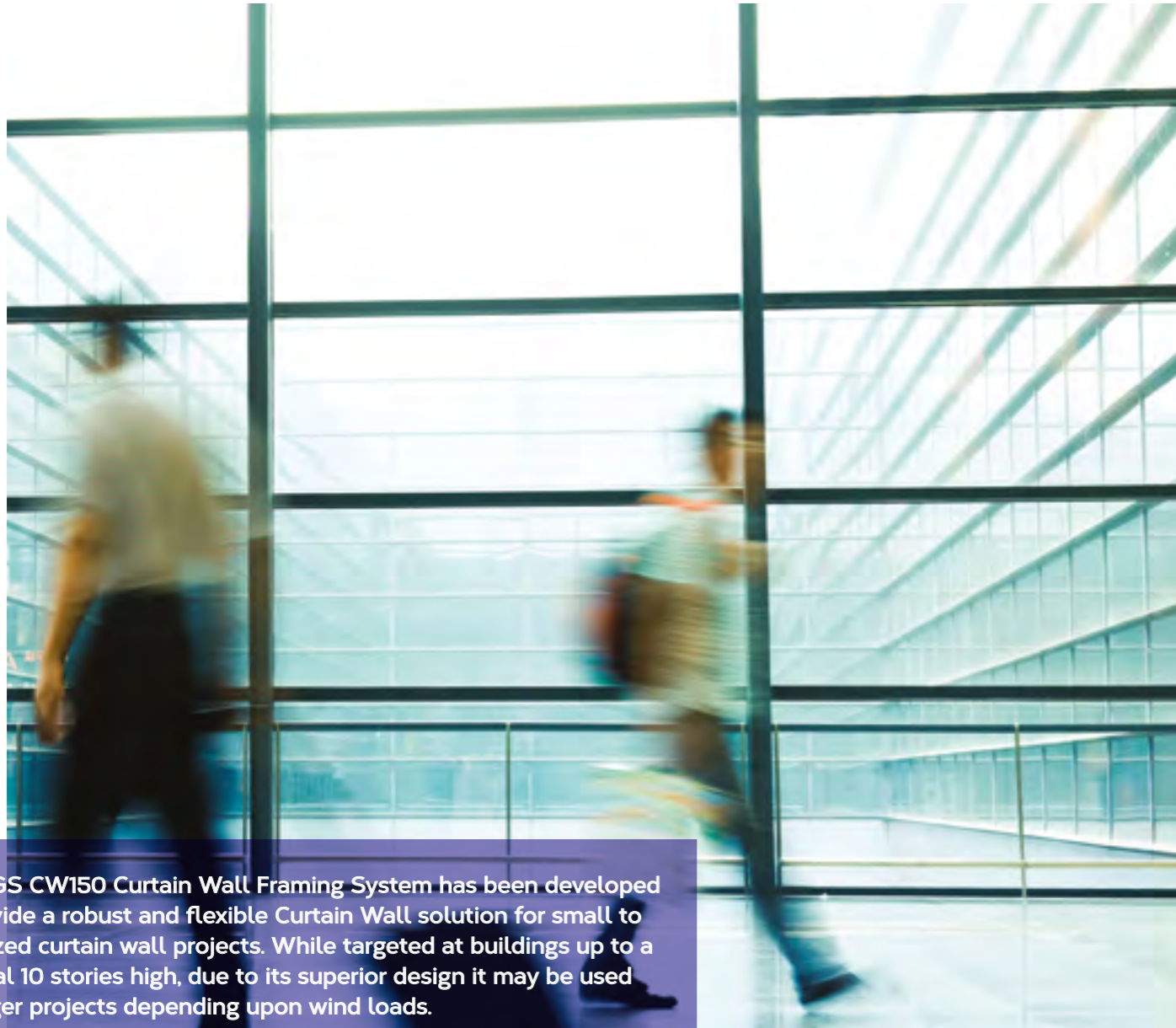


\*Log on to [www.wers.net](http://www.wers.net) to view the full Capral AFRC product directory



# Framing Systems

## AGS CW150 Curtain Wall Framing System

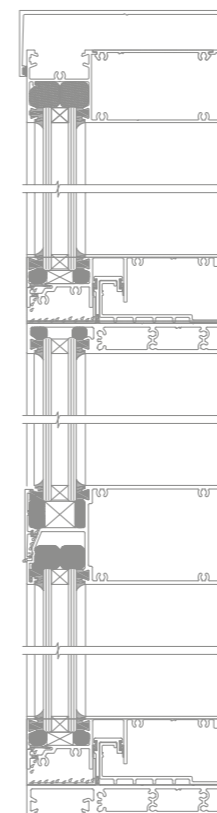


The AGS CW150 Curtain Wall Framing System has been developed to provide a robust and flexible Curtain Wall solution for small to mid-sized curtain wall projects. While targeted at buildings up to a nominal 10 stories high, due to its superior design it may be used on larger projects depending upon wind loads.

A feature of this product is the strict AS4284 testing regime and the co-development of building and mullion brackets allowing it to be installed as a fully tested system without having to independently engineer brackets for each project.

Another key feature is the integration of sun shading directly into the Curtain Wall system without sacrificing structural or water performance. Proprietary brackets have been designed to allow the fitment of vertical or horizontal sunshade directly on the mullions (not compatible with structural mullions).

Being based upon the AGS 419 Flushline Framing System, it also offers compatibility with a broad range of operable products in the AGS family.



### FEATURES AND BENEFITS:

- 150mm x 75mm frame
- Forward positioned glazing pocket gives a clean and modern external appearance
- Double glazed as standard with single glazed and spandrel options using inlay beads
- Structurally glazed vertical mullions available
- Can incorporate proprietary sun shade brackets integrated into the frame without sacrificing structural or water performance
- Proprietary building brackets provide for a fully tested system
- Compatible with 419 150mm DG framing system providing a consistent look across your project
- Designed and tested as a wet glazed panellised system to AS4284. If AS2047 is specified, may be installed dry-glazed and non-panellised

### PERFORMANCE

Wind Pressure	Ultimate Pressure	Water Penetration
up to 3000Pa	up to 4500Pa	900Pa Static, 1800Pa Cyclc

### STANDARDS COMPLIANCE

Tested to AS4284, 2008

### FRAME SIZE

Depth	Height
150mm	75mm

### MAX. RECOMMENDED SIZE

<b>Height</b>	up to 3500mm
<b>Width</b>	up to 1500mm
<b>Weight</b>	up to 210kg

### STACK JOINT MOVEMENT

<b>Horizontal</b>	+/- 5mm
<b>Vertical</b>	+/- 10mm

### GLAZING CAPACITY

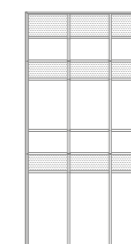
<b>Single Glaze</b>	10mm - 12mm
<b>Double Glaze</b>	24mm - 28mm

### WINDOW ENERGY RATINGS\*

150mm Double Glazed <sup>1</sup>		Total Window - AFRC			
Window ID	Glazing	Uw	SHGC	Tvw	Air Inf.
CAP-073-01	6mm Clear 12mm Air Gap 6mm Clear	3.8	0.64	0.70	0.27
CAP-073-06	6,38mm Comfort Plus Neutral 12mm Air Gap 6mm Clear	3.2	0.40	0.46	0.27
CAP-073-13	6mm Clear 12mm Argon Gap 6mm Energy Tech	2.9	0.61	0.64	0.27

<sup>1</sup>Note: Figures refer to AGS 419 Flushline DG 150mm results.

### CONFIGURATIONS

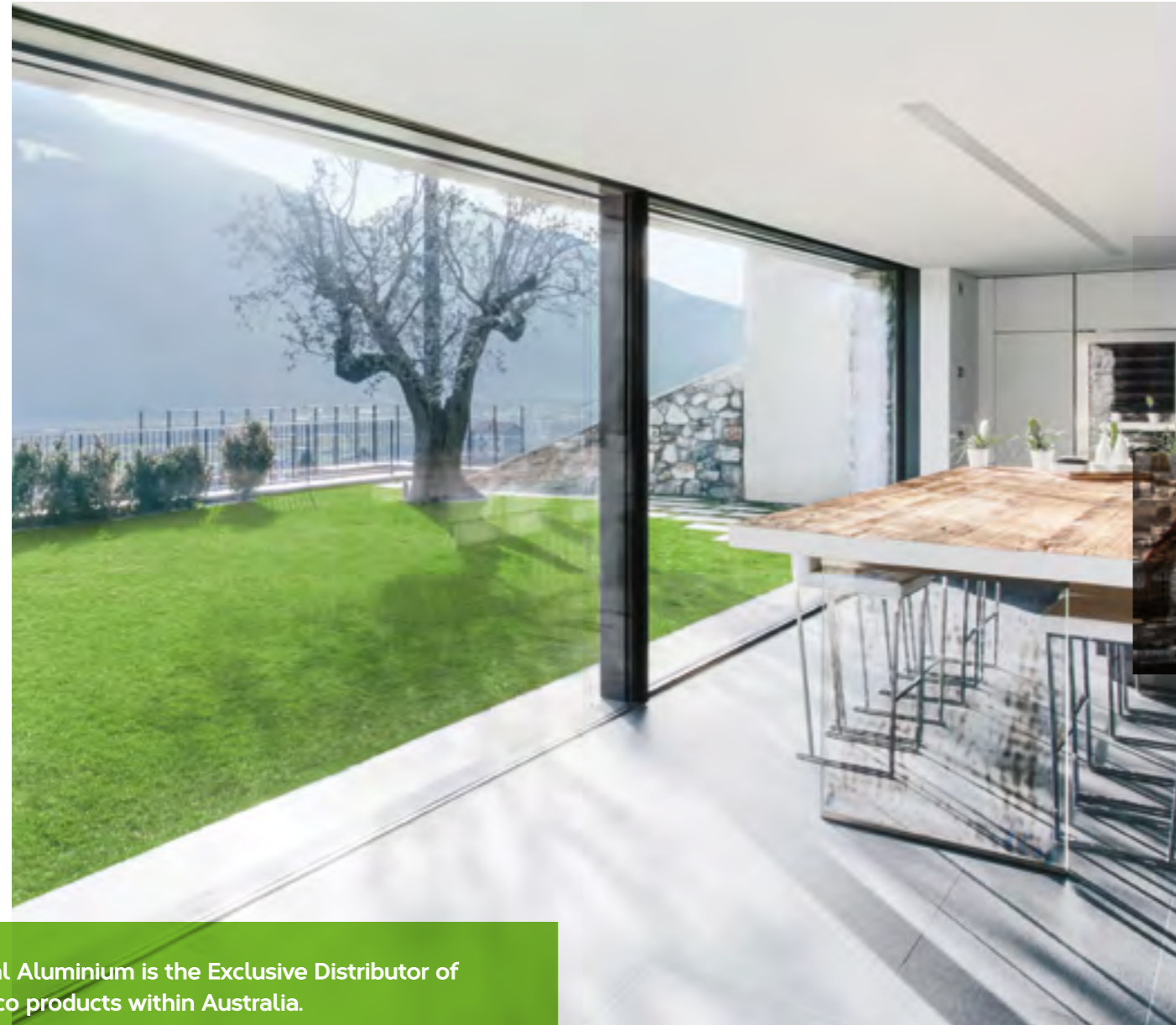


\*Log on to [www.wersnet.com](http://www.wersnet.com) to view the full Capral AFRC product directory

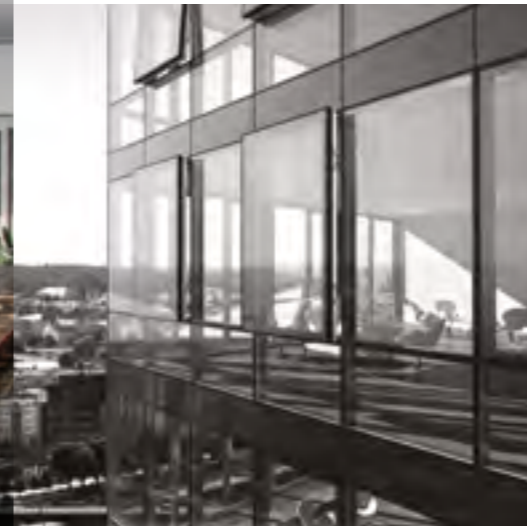




# System Solutions Schüco Windows, Doors & Facades



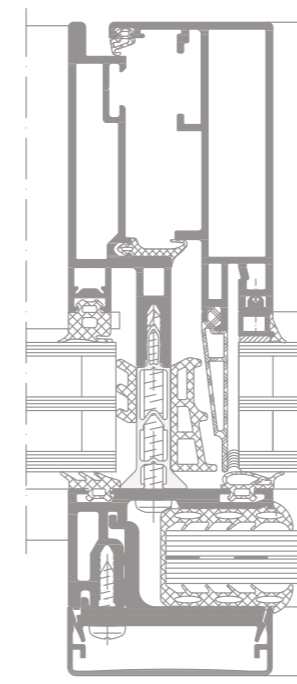
**SCHÜCO**  
Exclusive Distributor Australia



Capral Aluminium is the Exclusive Distributor of Schüco products within Australia.

Schüco products have long been considered the benchmark in technical excellence, thermal efficiency and innovation in the European market. As Australia's requirements for products that stretch the envelope of size, performance and aesthetic appeal continue to grow, we believe Schüco products offer a compelling proposition for the most prestigious and technically demanding architectural applications.

The Schüco core product range is now available and stocked in Australia.



Schüco Façade FWS 60 CVHI

## WINDOW SYSTEMS - FEATURES AND BENEFITS:

- Maximum insulation achieved through an enlarged insulation zone with foam-filled insulating bars, an optimised centre gasket and a new type of thermal insulation in the glazing rebate
- Security is achieved through internal "AvanTec SimplySmart" fitting provide a high level of basic protection that can be increased to Burglar resistance class 3 (RC3)
- Fittings can be operated manually, mechatronically or centrally via a building management system
- Schüco TipTronic - integrated monitoring of closing offers a confirmation function through a magnetic switch for electronic closing checks when leaving the house
- Comprehensive selection of opening types for mechatronic windows, including toplights, horizontal pivot windows and side-hung ventilation vents
- System solutions for decentralised ventilation
- Choice of feature glazing beads from beautifully straight contours to rounded versions for an individual look

## SLIDING DOOR SYSTEMS - FEATURES AND BENEFITS:

- Sliding systems include, sliding, lift-and-slide, folding sliding, tilt/sliding configurations
- Narrow profile face widths ensures large units and maximum light penetration
- A range of fittings and design options to suit both commercial and residential projects
- Fitted with thermally broken aluminium profiles, efficient gaskets and high quality insulating glass for optimum thermal insulation and sound reduction results
- Touch of a button operation available with the completely concealed e-slide drive system, making it possible to move doors weighing up to 250kg
- Profile surface finishes can be designed with different colours inside and outside for design flexibility

## FACADE SYSTEMS - FEATURES AND BENEFITS:

- Mullion/transom façade systems include vertical façades with and without faceting, passive house applications, skylights, structural glazing and Panorama Design façades
- Suitable for high glass loads from 650kg to 950kg
- Single, double or triple glazing up to a max 64mm thickness
- Structural glazing joint configuration using: Flush-fitted dry glazing, joint with U-shaped dry glazing, joint using wet sealing, fixing on two sides with vertical cover caps and horizontal cover caps

Visit [www.schueco.com/web2/au](http://www.schueco.com/web2/au) to view the full Schüco product range.





Capral Limited

ABN 78 004 213 692

[www.capral.com.au](http://www.capral.com.au)

1800 ALUMINIUM (258 646)